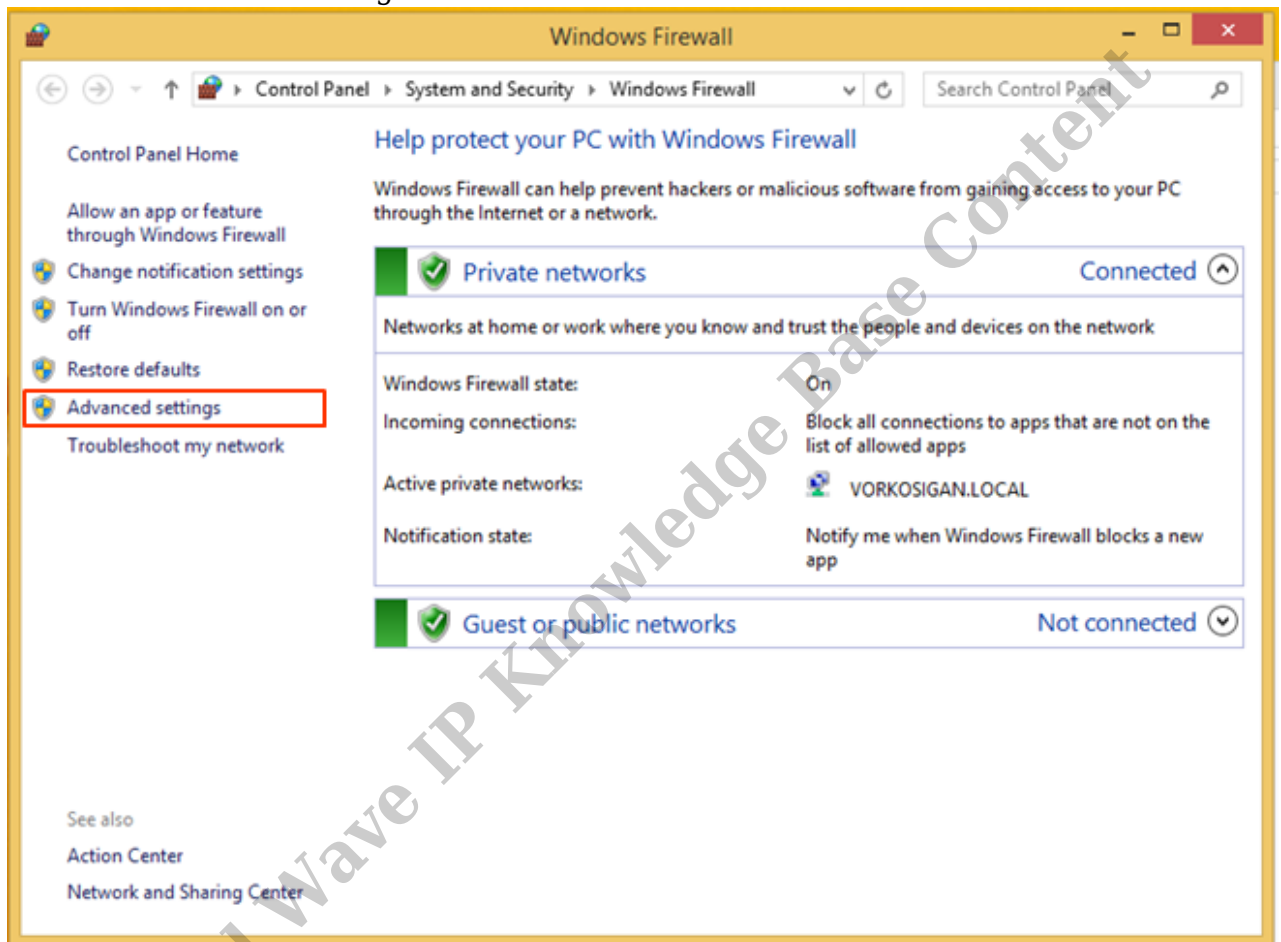


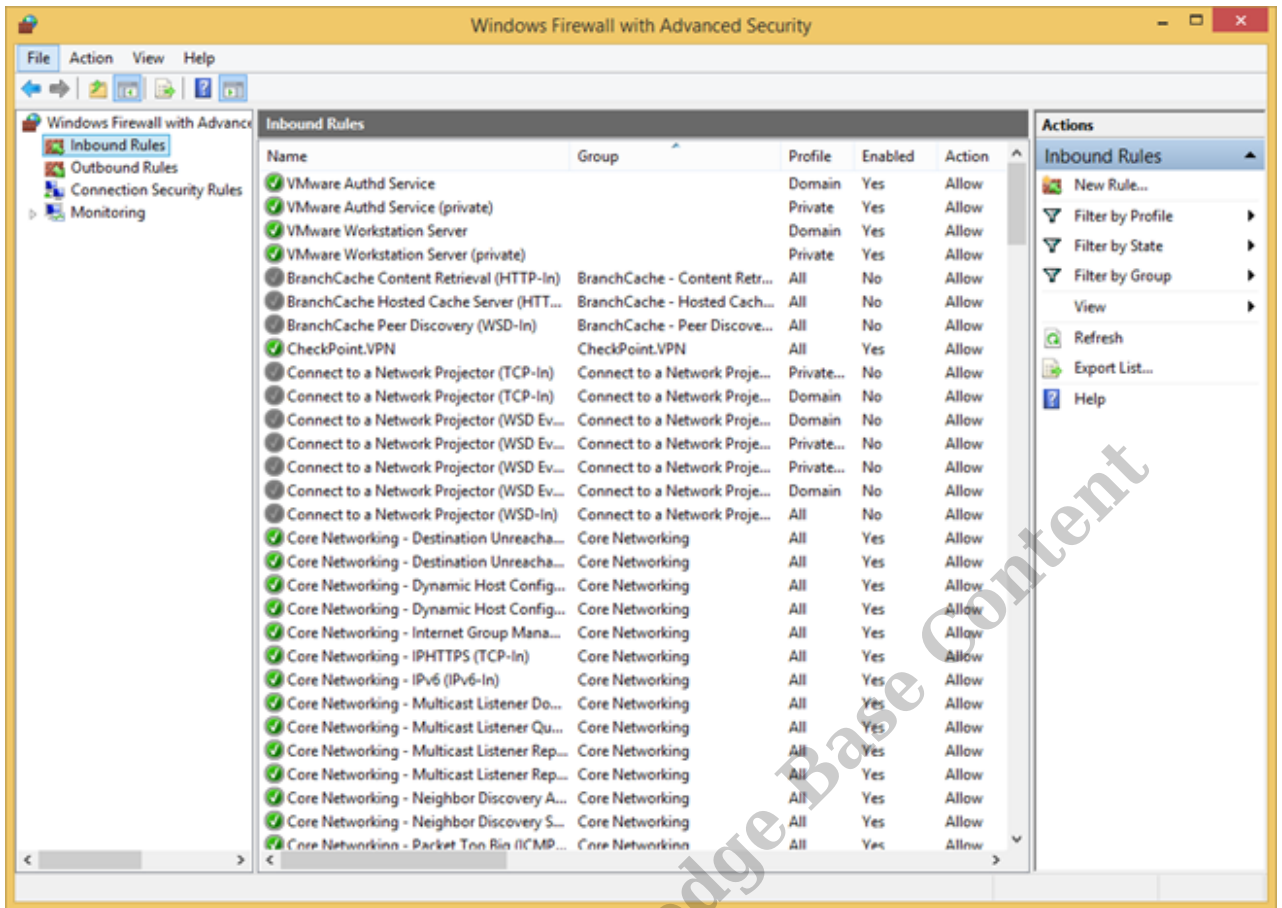
Add Firewall Exception for SQL

Last Modified on 10/01/2015 2:22 am EDT

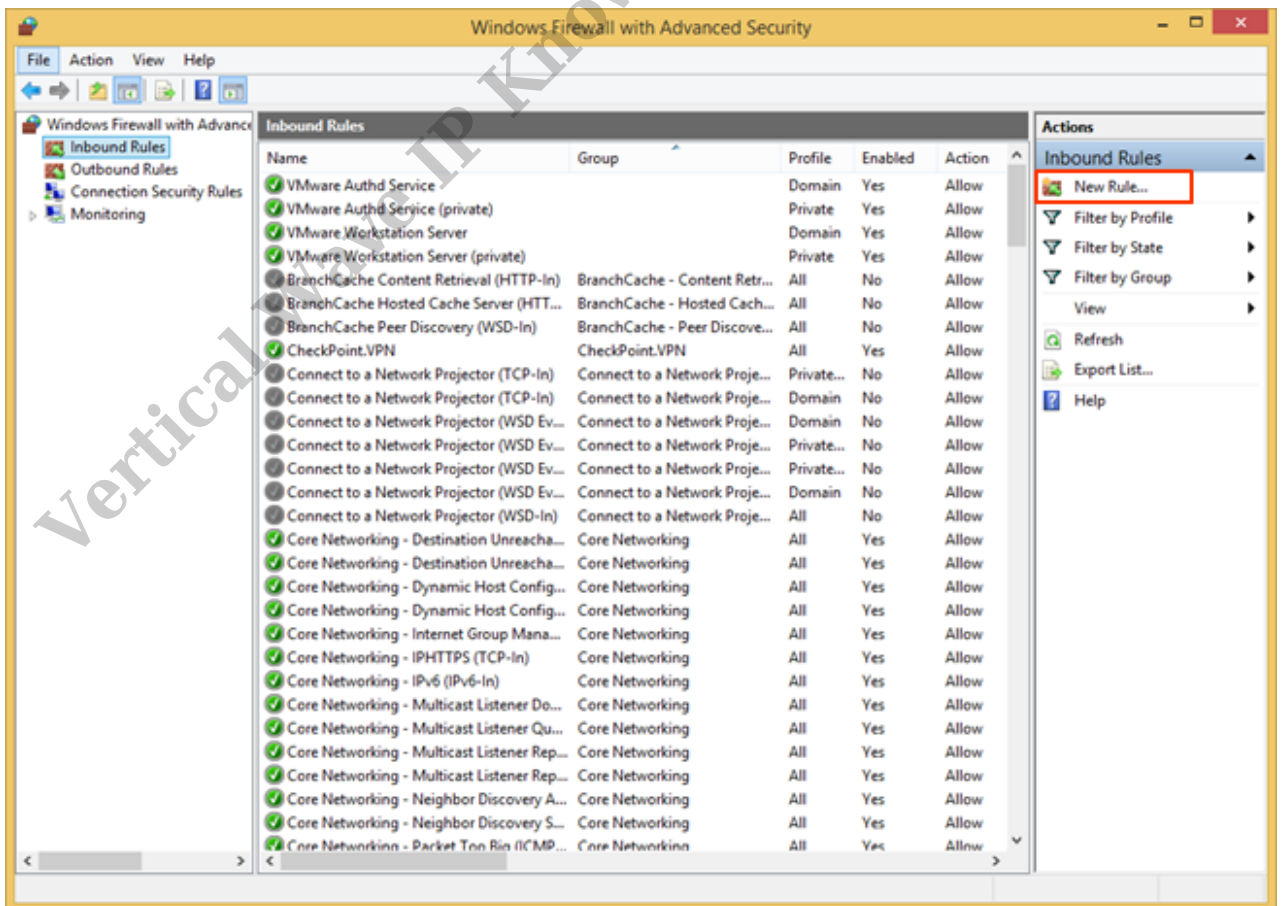
1. Click Start and type Firewall to find the Firewall application.
2. Click on the Windows Firewall application to launch it.
3. Click on Advanced Settings.



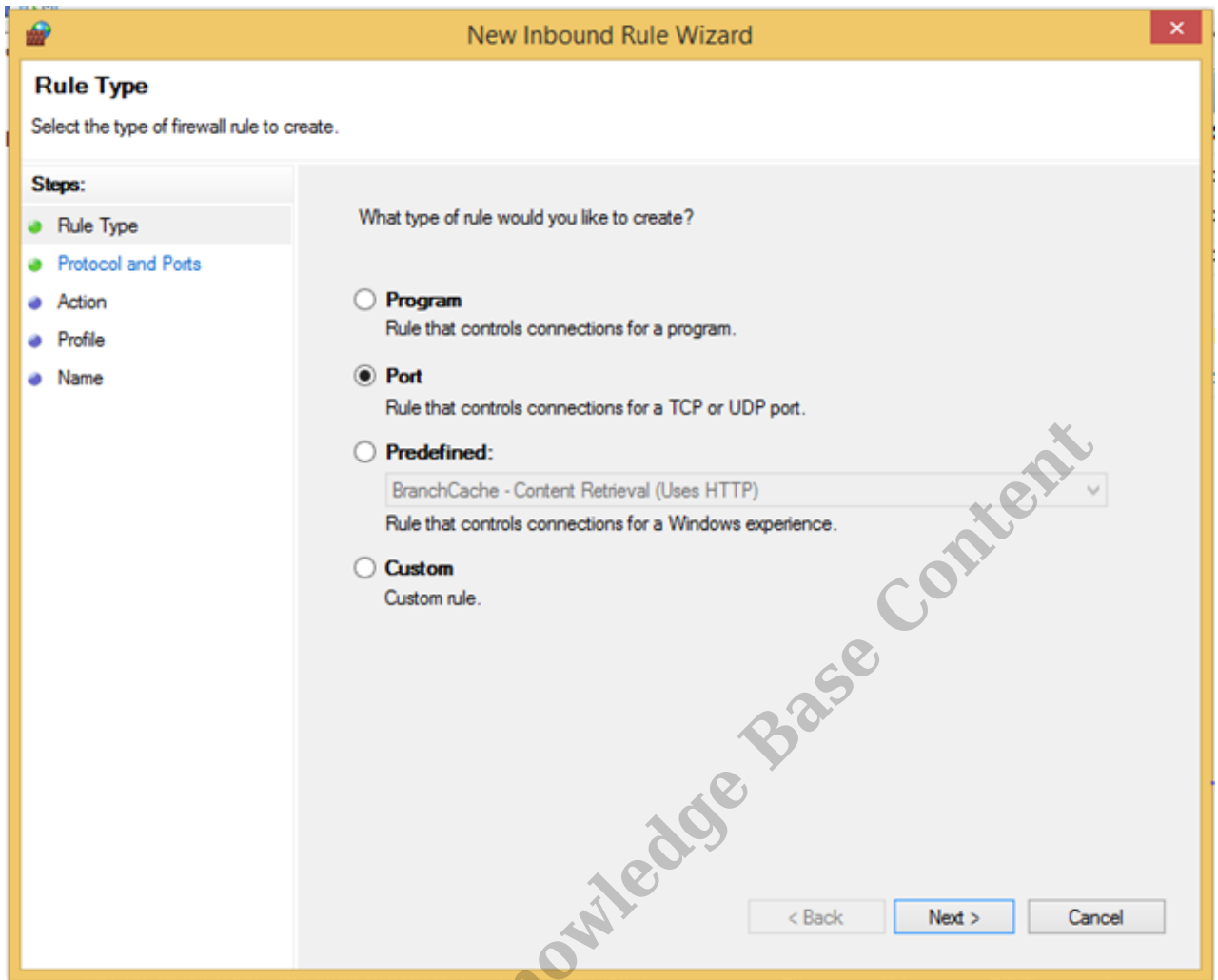
4. Click on Inbound Rules.



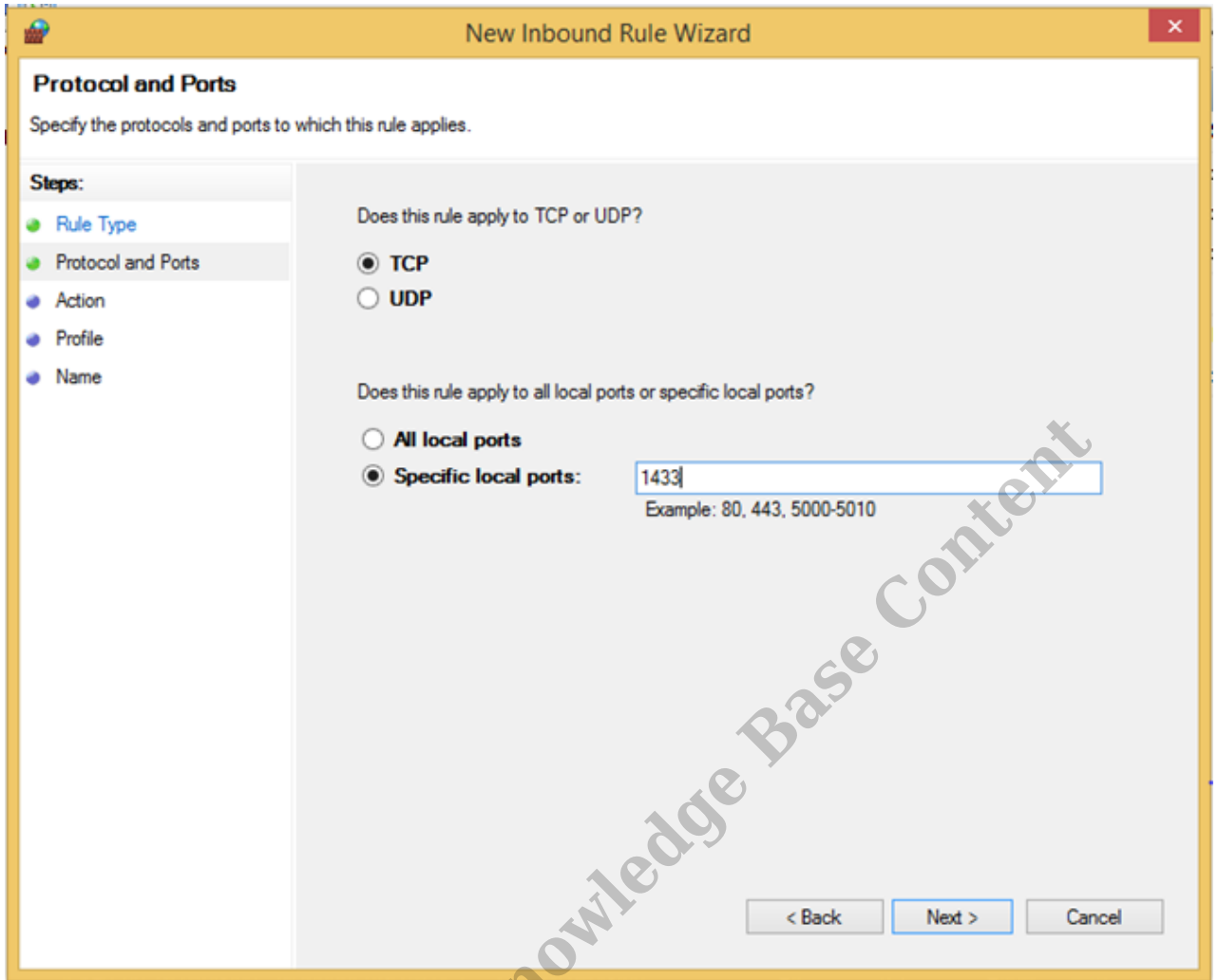
5. Click New Rule.



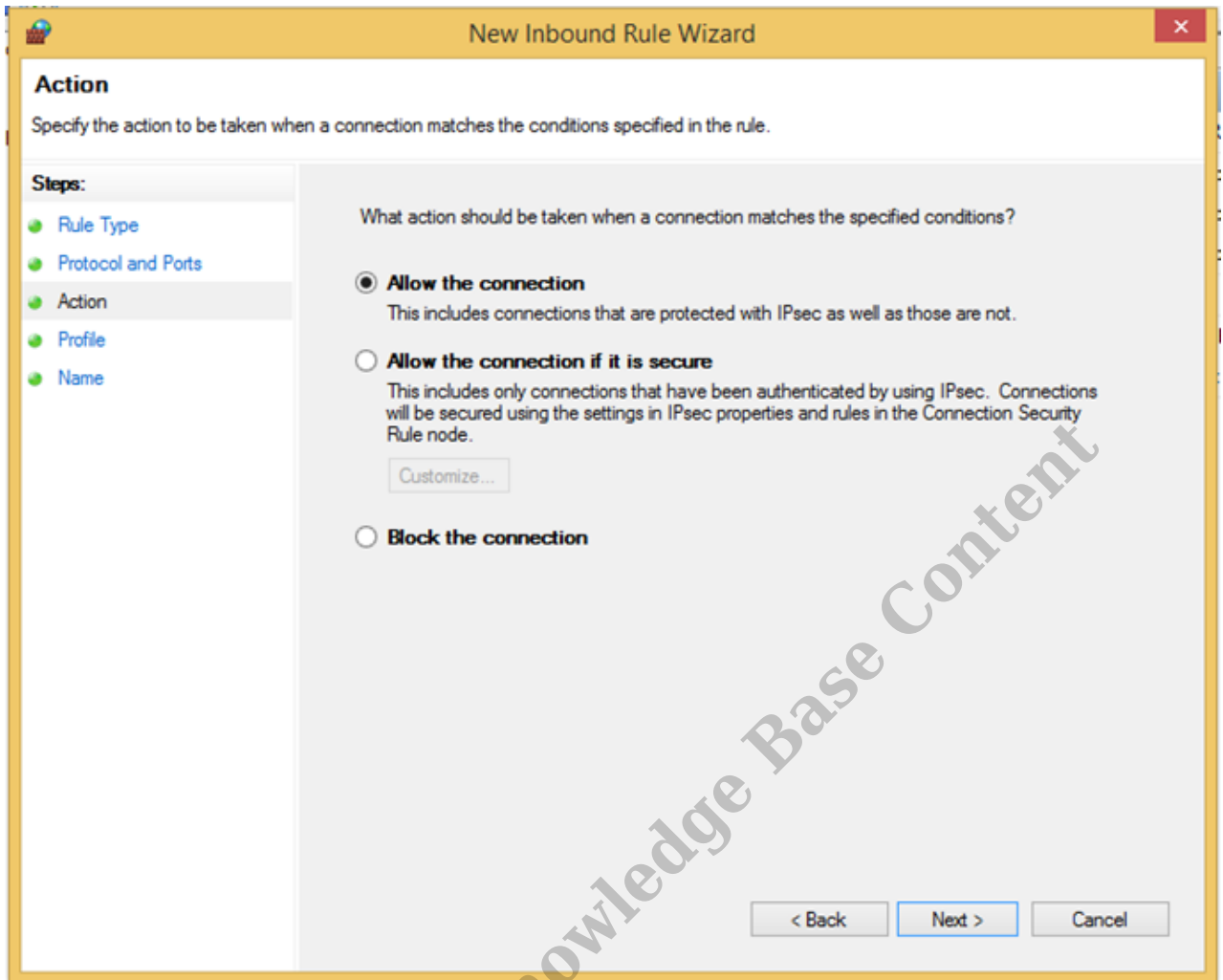
6. Choose to create a Port rule.



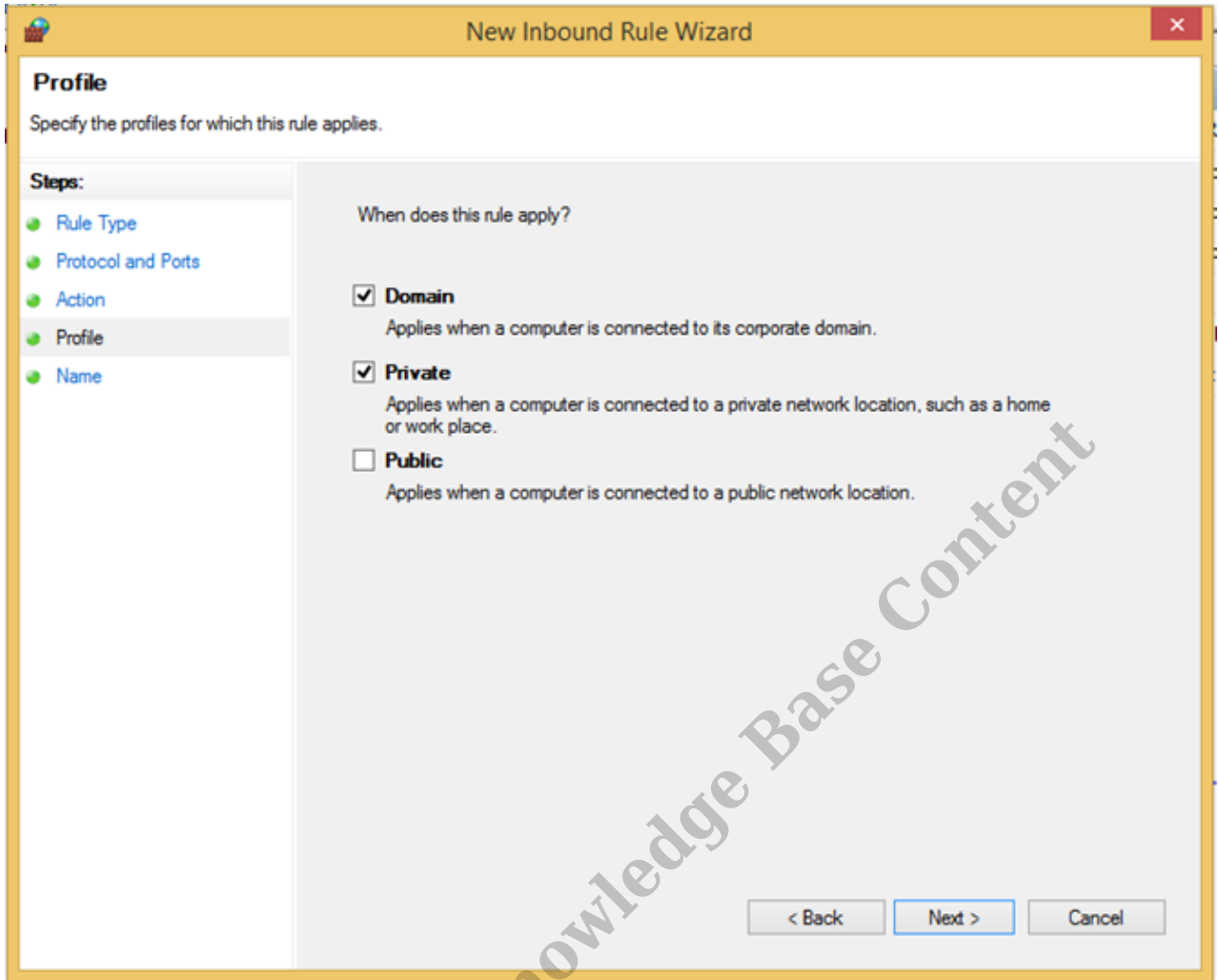
7. Enter port 1433 in the Specific local ports field. Click Next.



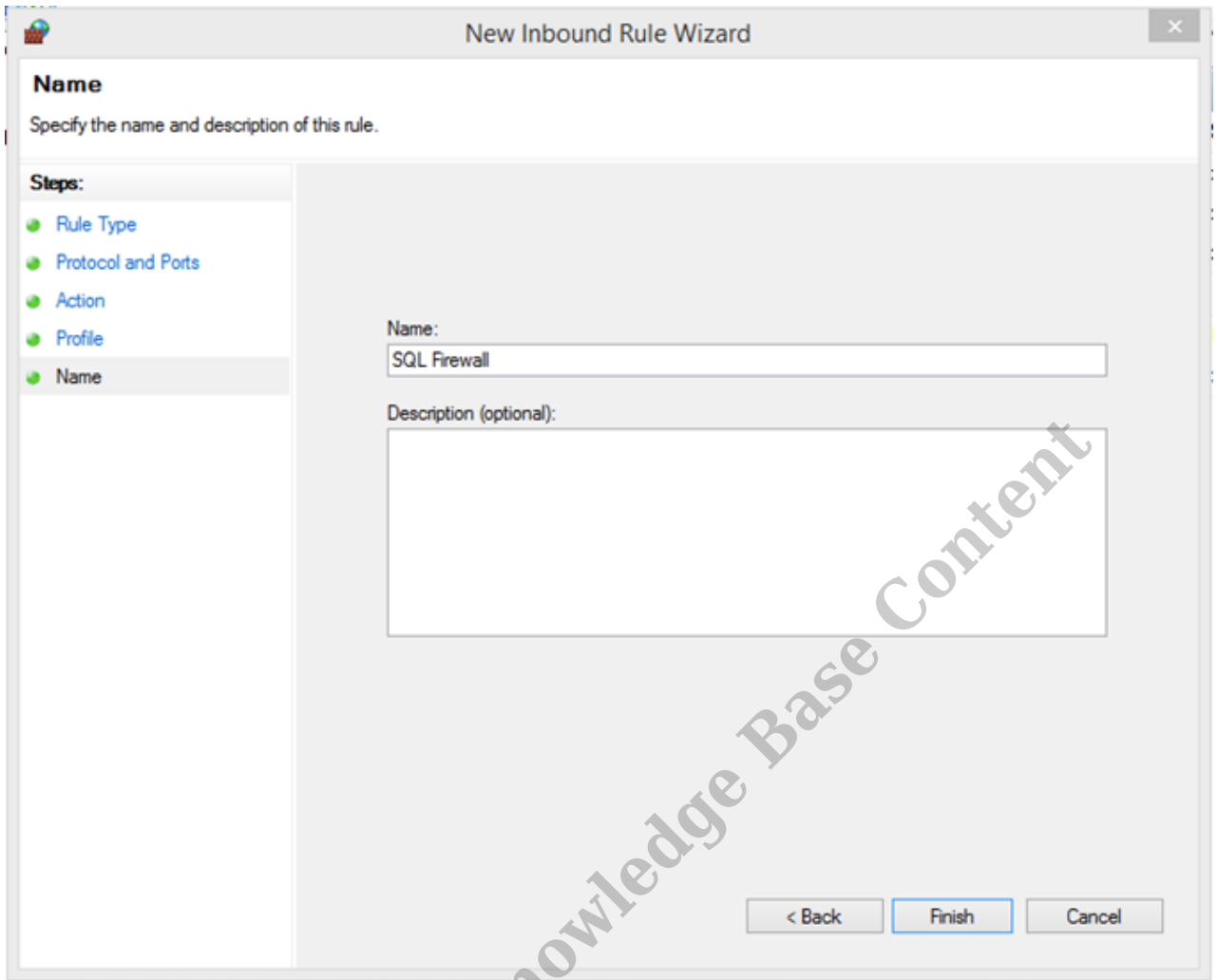
8. The action will be to "Allow the Connection" which is the default. Click Next.



9. Uncheck the Public profile. Click Next.



10. Set the Name for this rule and click Finish.



11. Close the Firewall panel by clicking X in the top-right corner.

RELATED ARTICLES [template("related")]