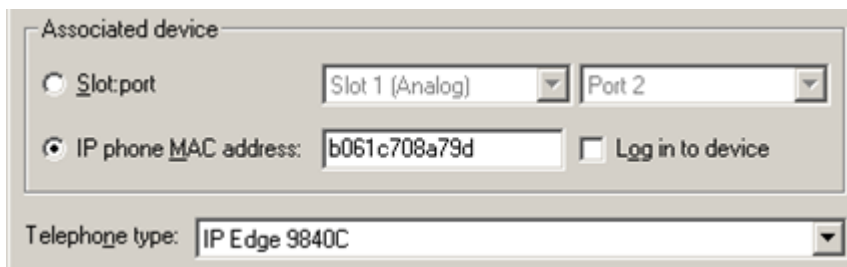


Configure VPN Phones using Wave IP for Vertical OpenVPN: Off-Wave

Last Modified on 11/03/2015 7:56 am EST

NOTE: When using 9800 series IP phones, it is highly recommended that the VPN phones not use the "Log in to Device" method for initial configuration. Explicitly set the phone's MAC address instead.



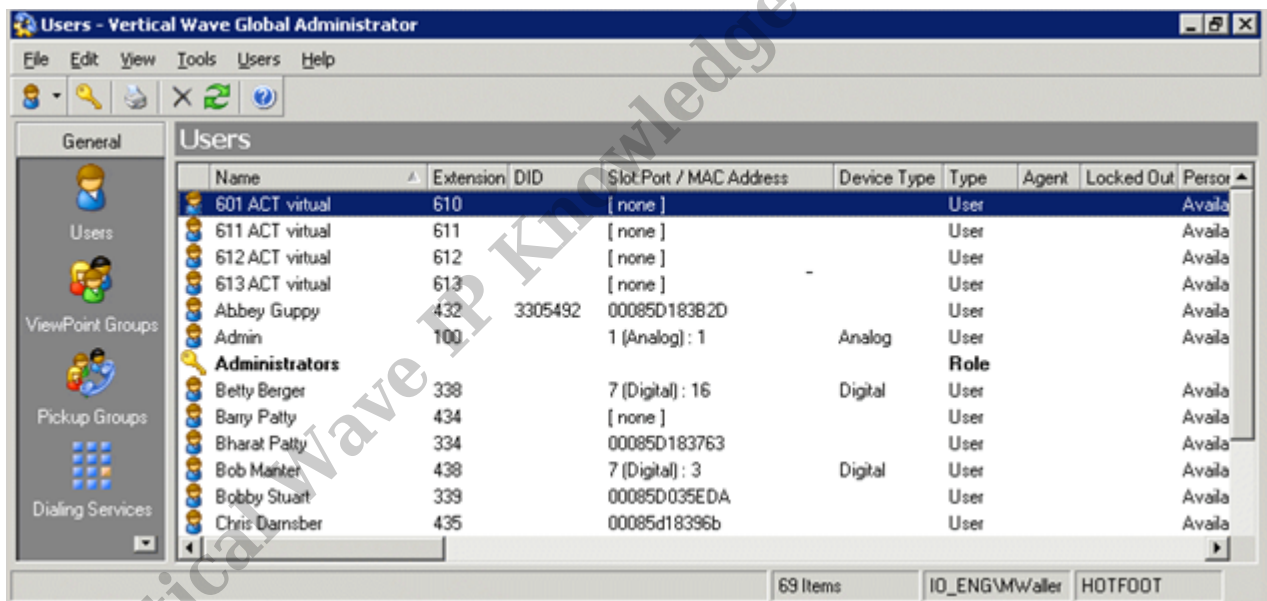
Associated device

Slot:port Slot 1 (Analog) Port 2

IP phone MAC address: b061c708a79d Log in to device

Telephone type: IP Edge 9840C

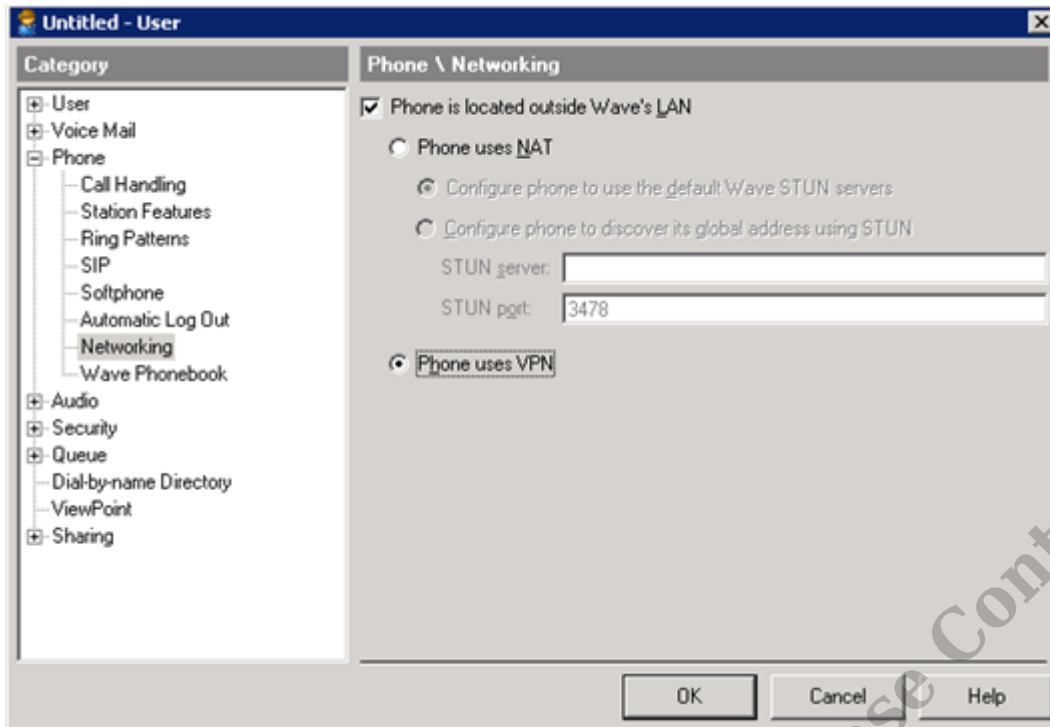
1. Login to User/Group Management (see [Login to User/Group Management](#)).



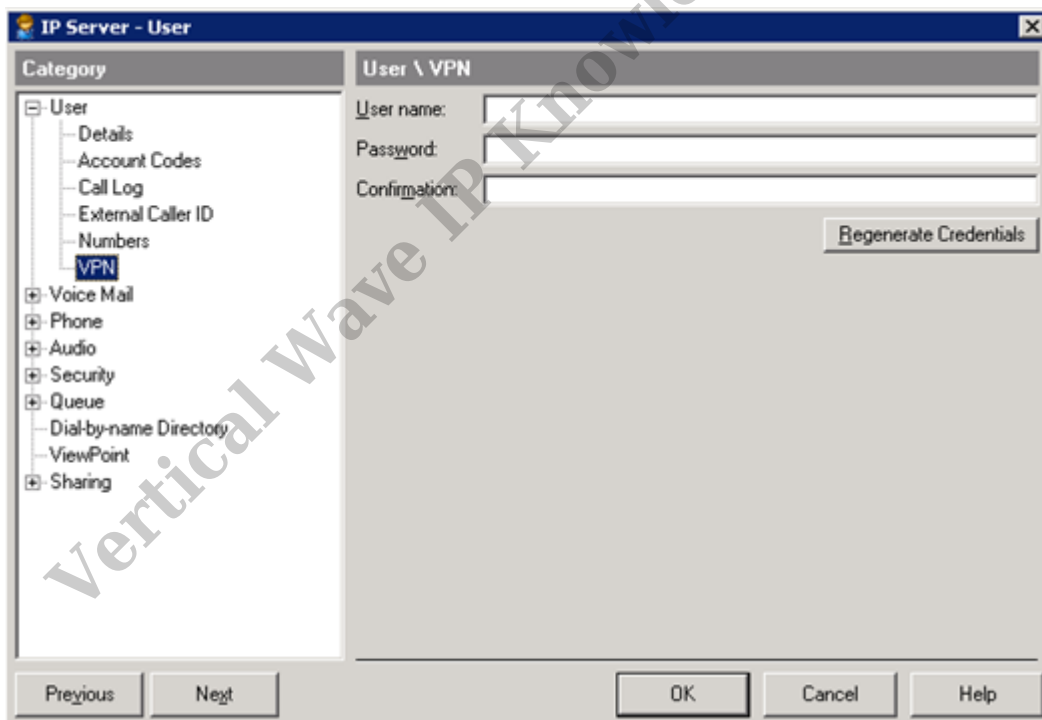
Name	Extension	DID	Slot/Port / MAC Address	Device Type	Type	Agent	Locked Out	Person
601 ACT virtual	610		[none]		User			Availa
611 ACT virtual	611		[none]		User			Availa
612 ACT virtual	612		[none]		User			Availa
613 ACT virtual	613		[none]		User			Availa
Abbey Guppy	432	3305492	00085D183B2D		User			Availa
Admin	100		1 (Analog) : 1	Analog	User			Availa
Administrators					Role			
Betty Berger	338		7 (Digital) : 16	Digital	User			Availa
Barry Palty	434		[none]		User			Availa
Bharat Palty	334		00085D183763		User			Availa
Bob Mañter	438		7 (Digital) : 3	Digital	User			Availa
Bobby Stuart	339		00085D035EDA		User			Availa
Chris Darnsber	435		00085d18396b		User			Availa

2. Double-click on the User in the Users list to open the user record.

NOTE: The user must be configured with a supported IP phone type (Edge 9800 series phone or 5000i Gigabit model).



3. Select the Phone category on the left-hand menu and then choose Networking.
4. Under Networking, check the "Phone is located outside Wave's LAN" box and then select Phone uses VPN.



5. Under Wave 4.5 and later, VPN credentials should automatically be configured for the user. Verify, by clicking User and then VPN. The User Name and Password fields should be filled in (though the password will just show **** to protect the password). If the fields are blank (as in the image above), then click Regenerate Credentials to make sure and add credentials.
6. Press OK to save User changes.

7. Make sure the Wave IP is configured to support Vertical OpenVPN: Off-Wave mode (see [Configuring Vertical OpenVPN: Off-Wave](#)).
8. Plug the supported IP phone into the network to be configured (see [Initially Configure an Edge 9800 IP phone](#)).
9. When the phone is completely configured, it will stick on a screen showing "VPN Trying" and never complete (because it is inside the network). With the 9800 series phones, it is possible to press Cancel and the phone should come up as a regular internal phone to test it. This does not test the VPN configuration.
10. Place the phone on an external network that has internet connectivity to test the phone.

RELATED ARTICLES [template("related")]

Vertical Wave IP Knowledge Base Content