

# Login to OpenVPN Server

Last Modified on 11/17/2015 7:20 am EST

There are three possibilities: [Custom](#), [Applications Server](#), [Vertical OpenVPN Image](#)

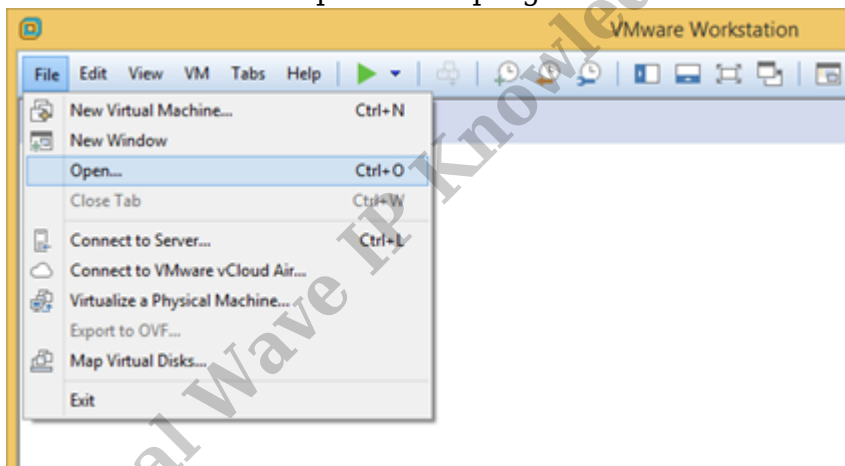
1. Using a custom OpenVPN Server will require using the login procedure for that device.

**NOTE:** *This option refers to a 3rd-party hardware or software server, not just the standard Vertical OpenVPN image operating in Custom Deployment.*

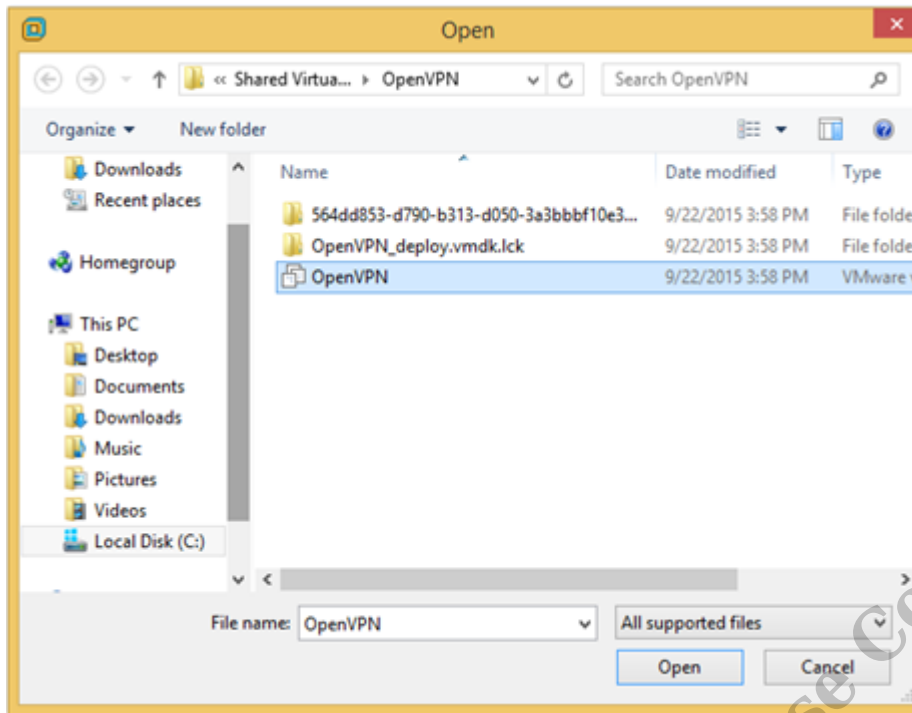
2. When using the standard applications server provided by Vertical Direct use this process:
  - a. Log in to the application server using the credentials provided. This can either be directly using monitor, keyboard, and mouse; or via Remote Desktop Protocol (RDP).
  - b. Click on the VMWorkstation icon in the Start Bar.



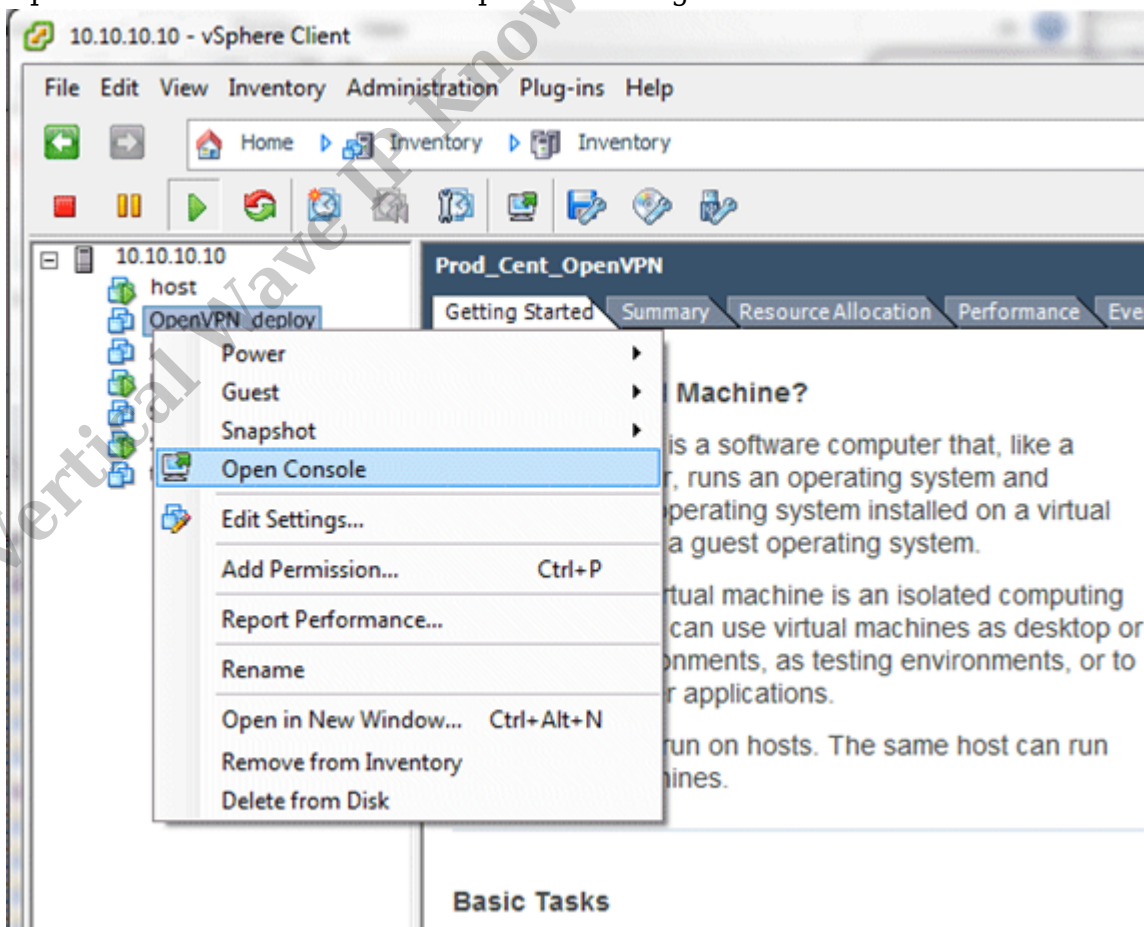
- c. Click File and then Open in the program.



- d. Select the OpenVPN file and click Open.

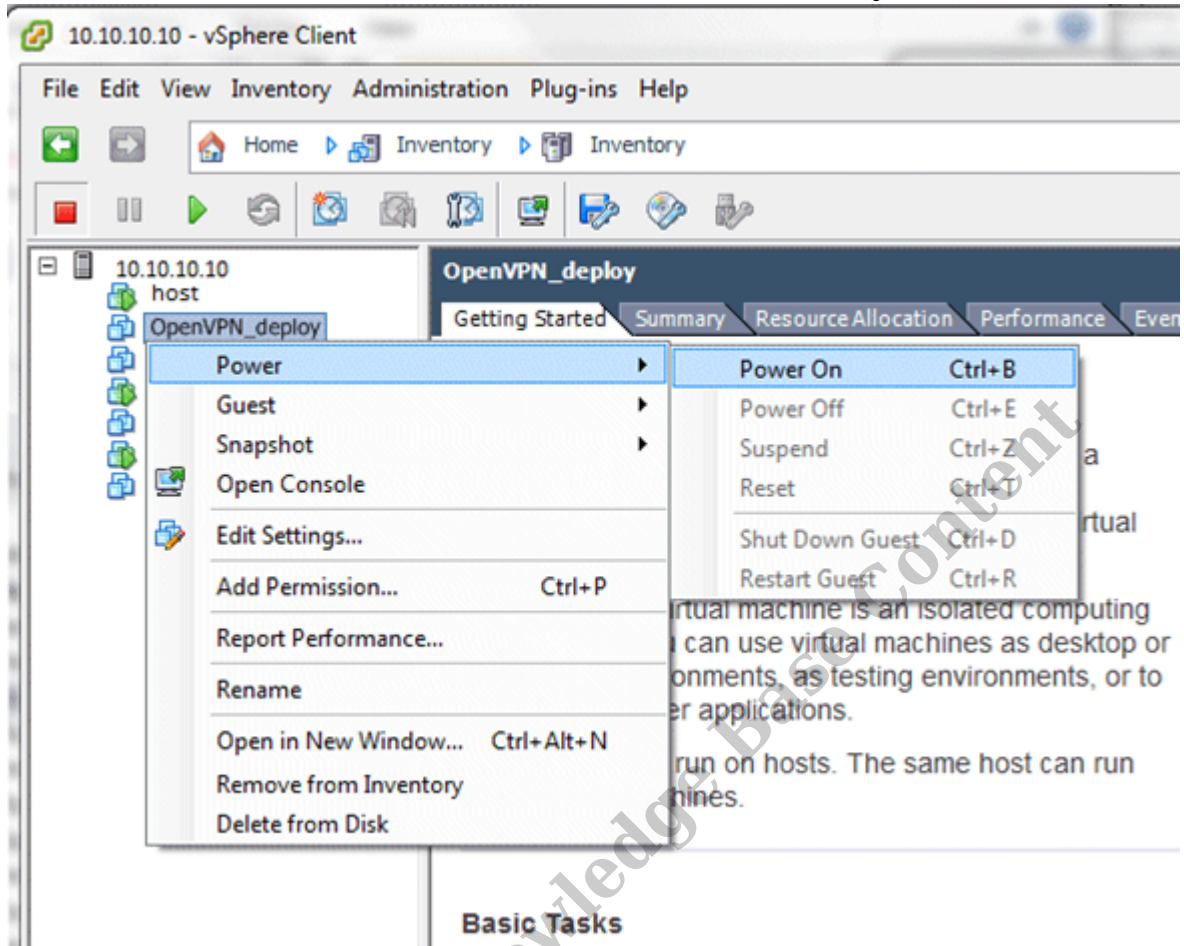


3. When using the Vertical-provided OpenVPN Server image use this process:
  - a. Launch the vSphere management client.
  - b. In the vSphere Client, right-click the OpenVPN Server virtual machine, and then choose Open Console. This will make it possible to login to the Virtual Machine.

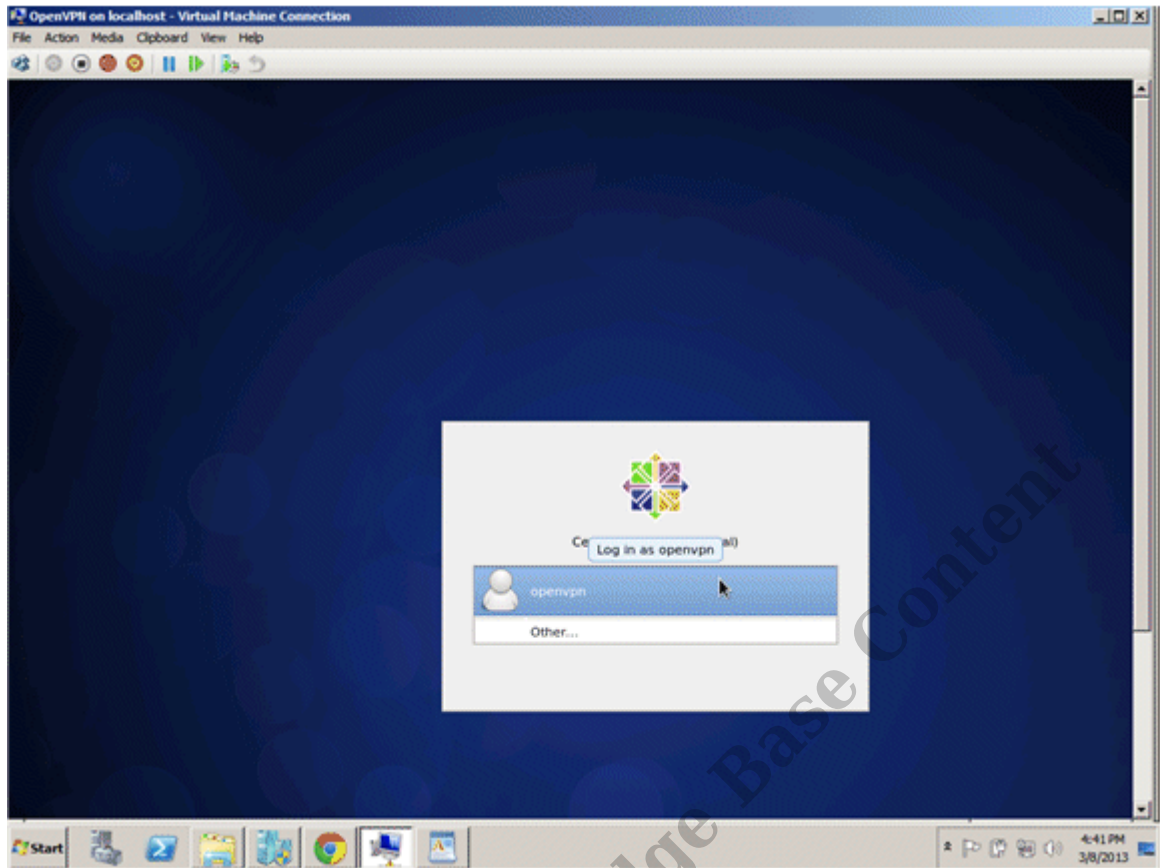


- c. If the virtual machine is not running, then right-click the OpenVPN Server virtual

machine, and then choose Power > Power On to start the system.



4. Whether using the application server or the standard OpenVPN image, the next step is the same.
  - a. In the console window, double-click on the openVPN user to logon.



- b. If this is the first time logging on, enter the Vertical default password, **Vertical4VoIP!**, and then click Log In.

**RELATED ARTICLES** [template("related")]