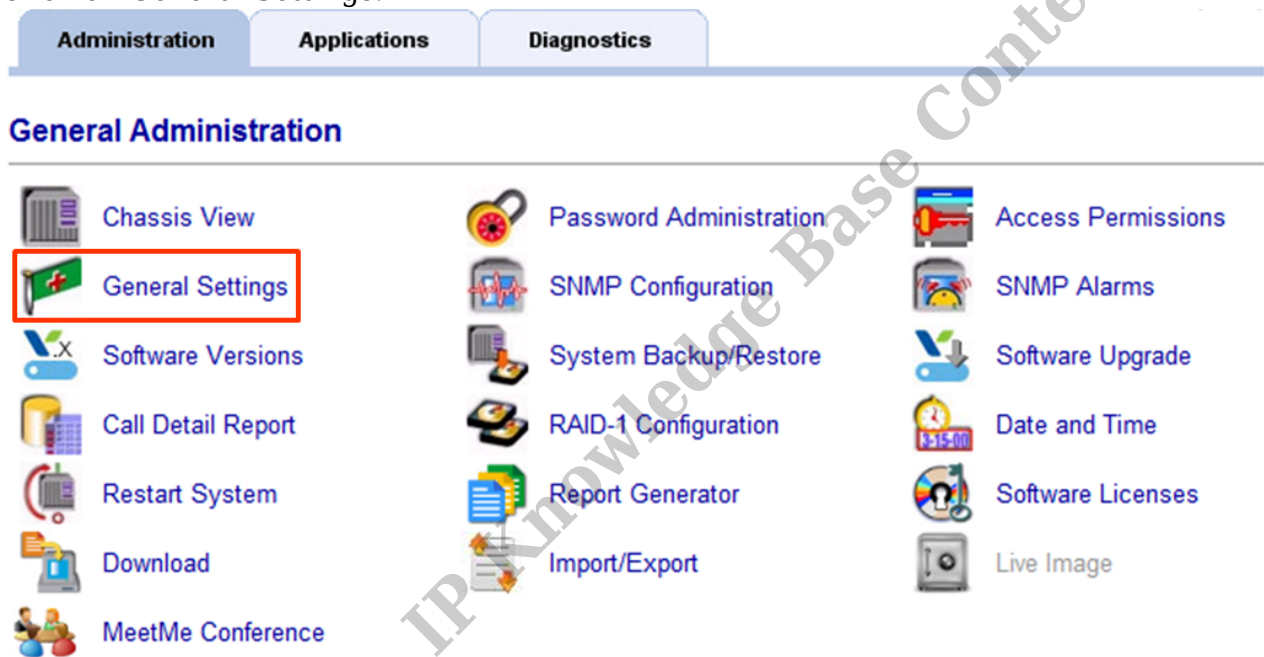


Synch Wave Time

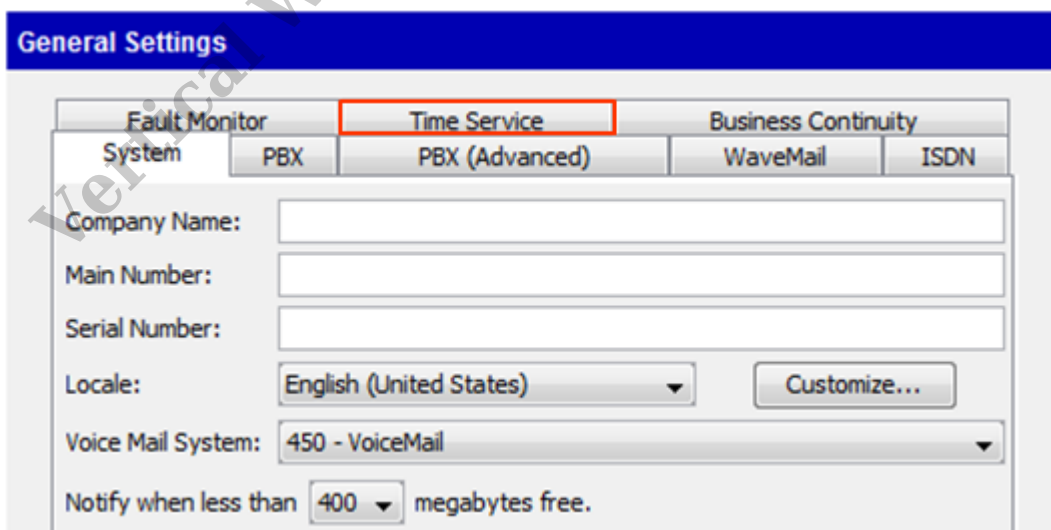
Last Modified on 09/30/2015 11:39 am EDT

Wave gets its time from NTP servers (by default it is set to check with Time.NIST.Gov). When initially configuring Wave or if the Wave has been isolated from the internet for significant time, a time synchronization event may not occur. This article explains how to manually run a synchronization event.

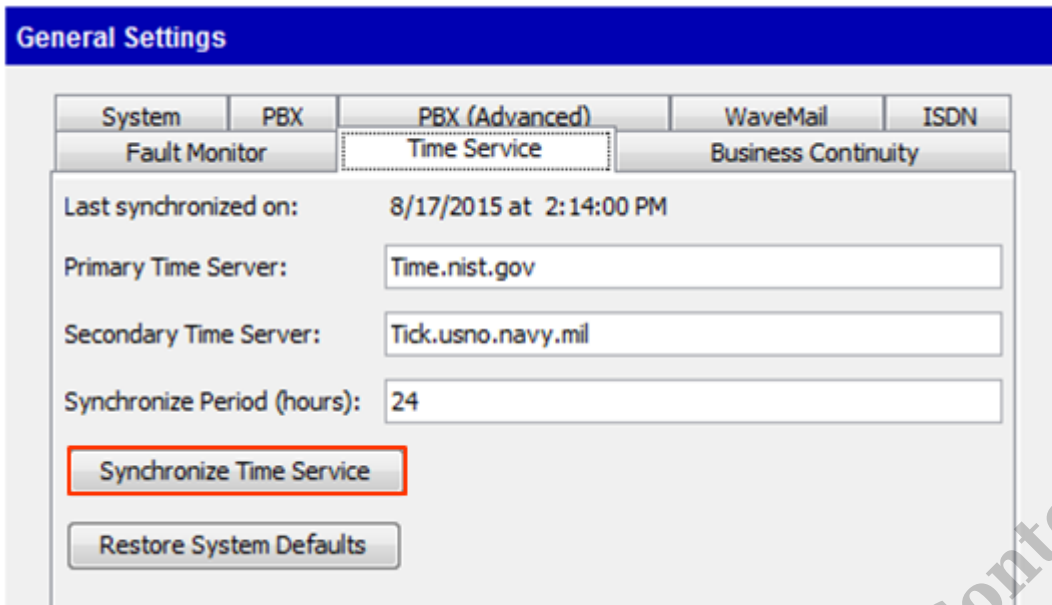
1. Login to Global Administrator (see [Login to Wave IP Global Administrator](#)).
2. Click on General Settings.



3. Choose the Time Service tab.



4. Click the **Synchronize Time Service** button.



5. Press Done to get out of General Settings.

RELATED ARTICLES [template("related")]

Vertical Wave IP Knowledge Base Content