

Login to System Desktop

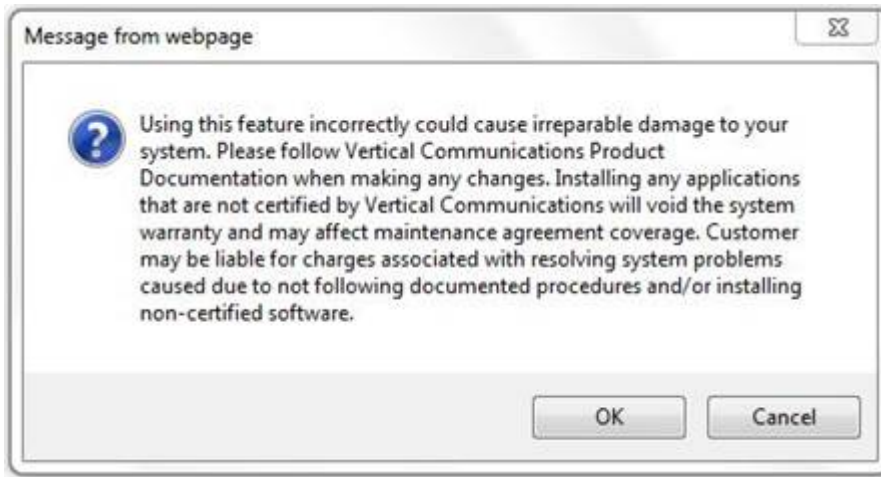
Last Modified on 09/30/2015 11:47 am EDT

1. Login to Global Administrator (see [Login to Wave IP Global Administrator](#)).
2. Select System Desktop.

The screenshot shows the Wave Global Administrator Management Console interface. At the top, there is a blue header with the Wave logo and the text "Wave Global Administrator Management Console". Below the header, there are several icons: "Log Off", "System Desktop" (highlighted with a red box), and "Help". To the right of these icons, it says "Vertical Comm Host: hotfoot" and "Vertical Wave ISM 5.0.0 (4367)". Below the header, there are three tabs: "Administration", "Applications", and "Diagnostics". The "Administration" tab is selected. Underneath, there are three sections: "General Administration", "PBX Administration", and "Data Administration". Each section contains a grid of icons and labels for various system management tasks.

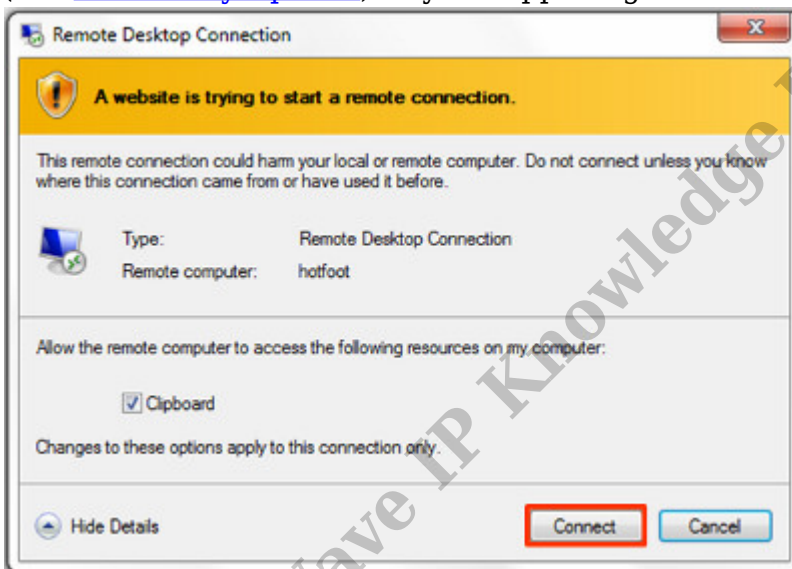
Section	Item	Item	Item
General Administration	Chassis View	Password Administration	Access Permissions
	General Settings	SNMP Configuration	SNMP Alarms
	Software Versions	System Backup/Restore	Software Upgrade
	Call Detail Report	RAID-1 Configuration	Date and Time
	Restart System	Report Generator	Software Licenses
	Download	Import/Export	Live Image
	MeetMe Conference		
PBX Administration	Telephone Templates	User/Group Management	Station Ports
	First Digit Table	System Speed Dial	Authorization Codes
	Hunt Groups	Organizations	Zone Paging Groups
	Resource Management	Local TAPI Configuration	IP Telephony
Data Administration	IP Network Settings	Network Connections	

3. A Warning Message will appear. Hit OK.

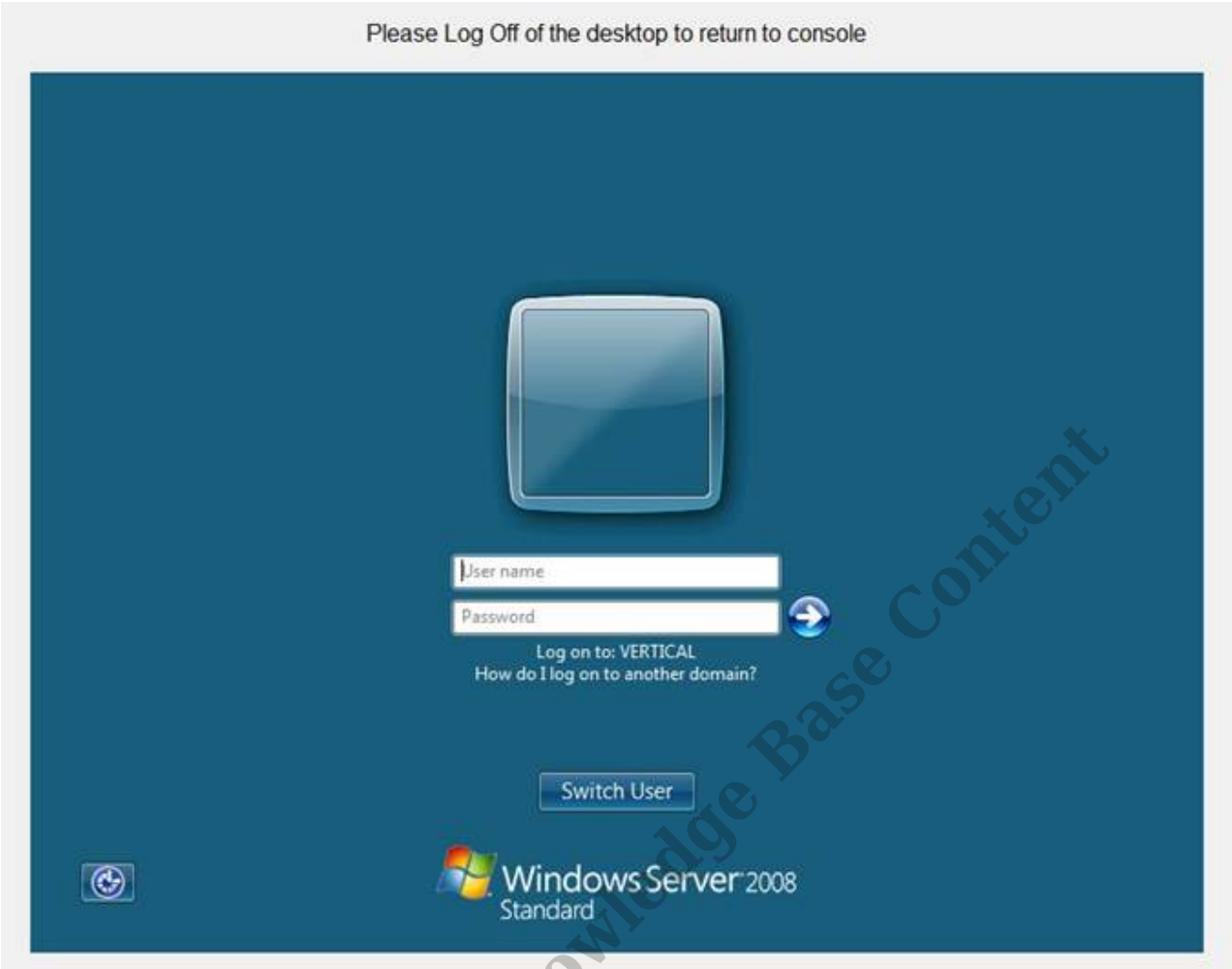


4. An RDP dialog will appear on the screen. Click Connect.

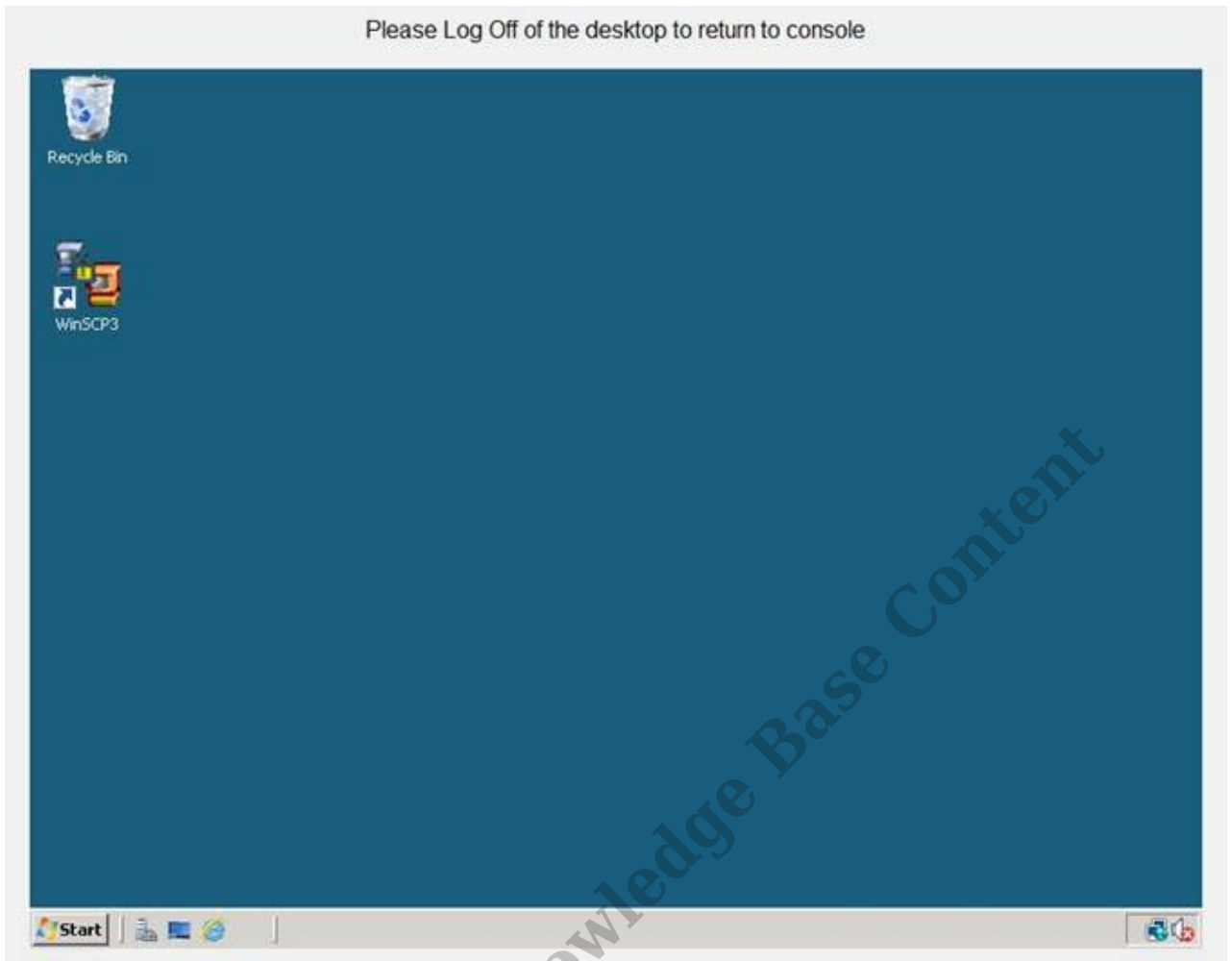
Note: *If this box does not appear, there may be a problem with Internet Explorer options. Press the Back button on the browser. Change the settings in the browser (see [IE Security Options](#)). Try the applet again.*



5. A login screen will appear. Use your Global Administrator credentials to login and press Enter.

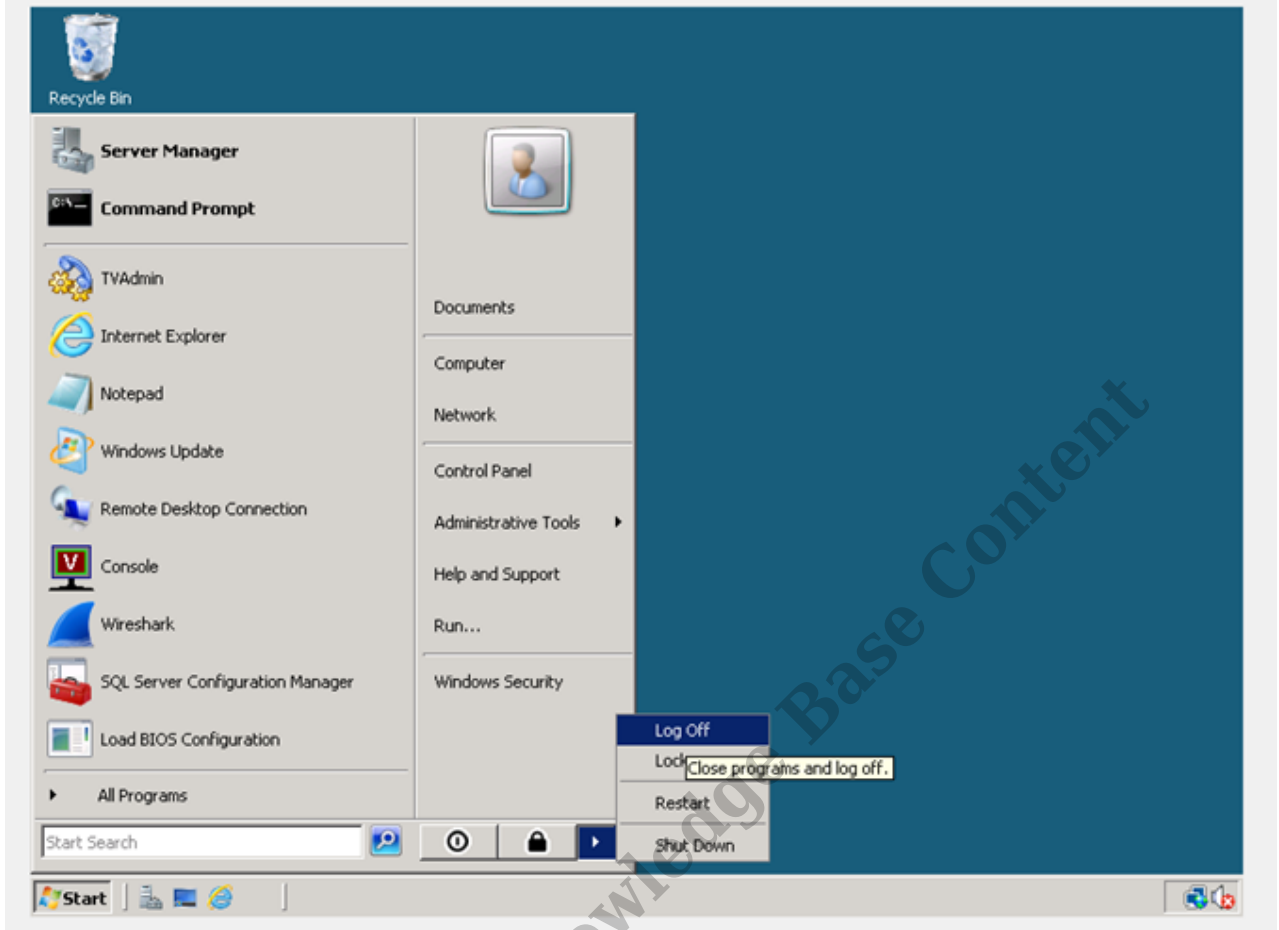


6. The desktop for the Wave IP will appear.



7. When finished choose the Start Button and Logoff to return to Global Administrator.

Please Log Off of the desktop to return to console



RELATED ARTICLES [template("related")]