

# Add a SIP Trunk (SCP)

Last Modified on 09/30/2015 12:54 pm EDT

SIP Trunks are added in Wave using a Signal Control Point (SCP). Add one for a given SIP trunk provider (no matter how many simultaneous SIP calls it can handle). The system must have a SIP Trunking license installed (See [Add Licenses to Wave](#)). The system must also have resources assigned to it for dealing with IP calls (See [Set Resource Management](#)).

Process for adding is:

1. Login to Global Administrator (see [Login to Wave IP Global Administrator](#)).
2. Choose IP Telephony.

Vertical Wave IP Knowledge Base Content

**Wave™ Global Administrator™ Management Console**

Log Off      System Desktop      Help

Vertical Comm  
Host: hotfoot  
Vertical Wave ISM 5.0.0 (4367)

Administration      Applications      Diagnostics

**General Administration**

- Chassis View
- Password Administration
- Access Permissions
- General Settings
- SNMP Configuration
- SNMP Alarms
- Software Versions
- System Backup/Restore
- Software Upgrade
- Call Detail Report
- RAID-1 Configuration
- Date and Time
- Restart System
- Report Generator
- Software Licenses
- Download
- Import/Export
- Live Image
- MeetMe Conference

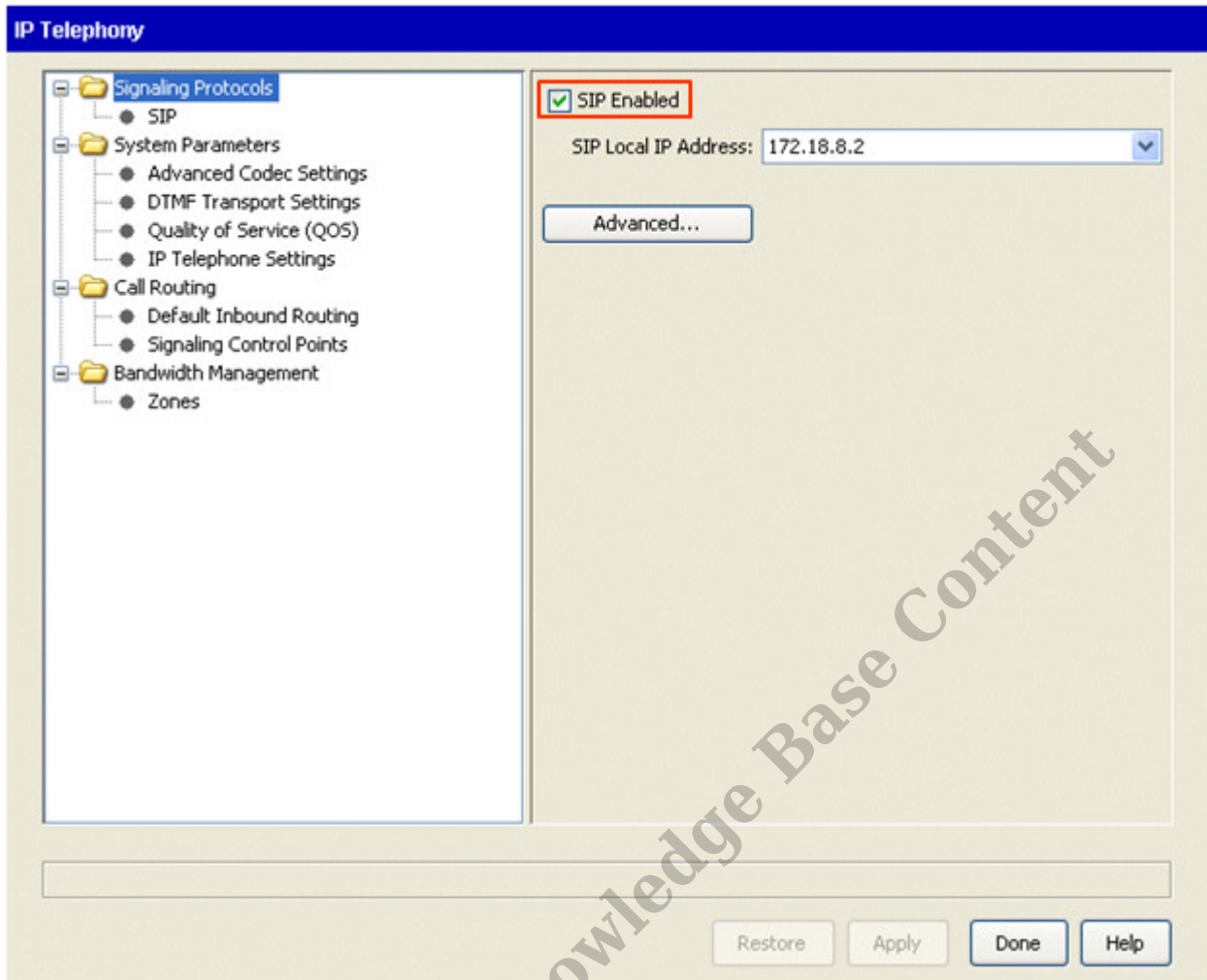
**PBX Administration**

- Telephone Templates
- User/Group Management
- Station Ports
- First Digit Table
- System Speed Dial
- Authorization Codes
- Hunt Groups
- Organizations
- Zone Paging Groups
- Resource Management
- Local TAPI Configuration
- IP Telephony

**Data Administration**

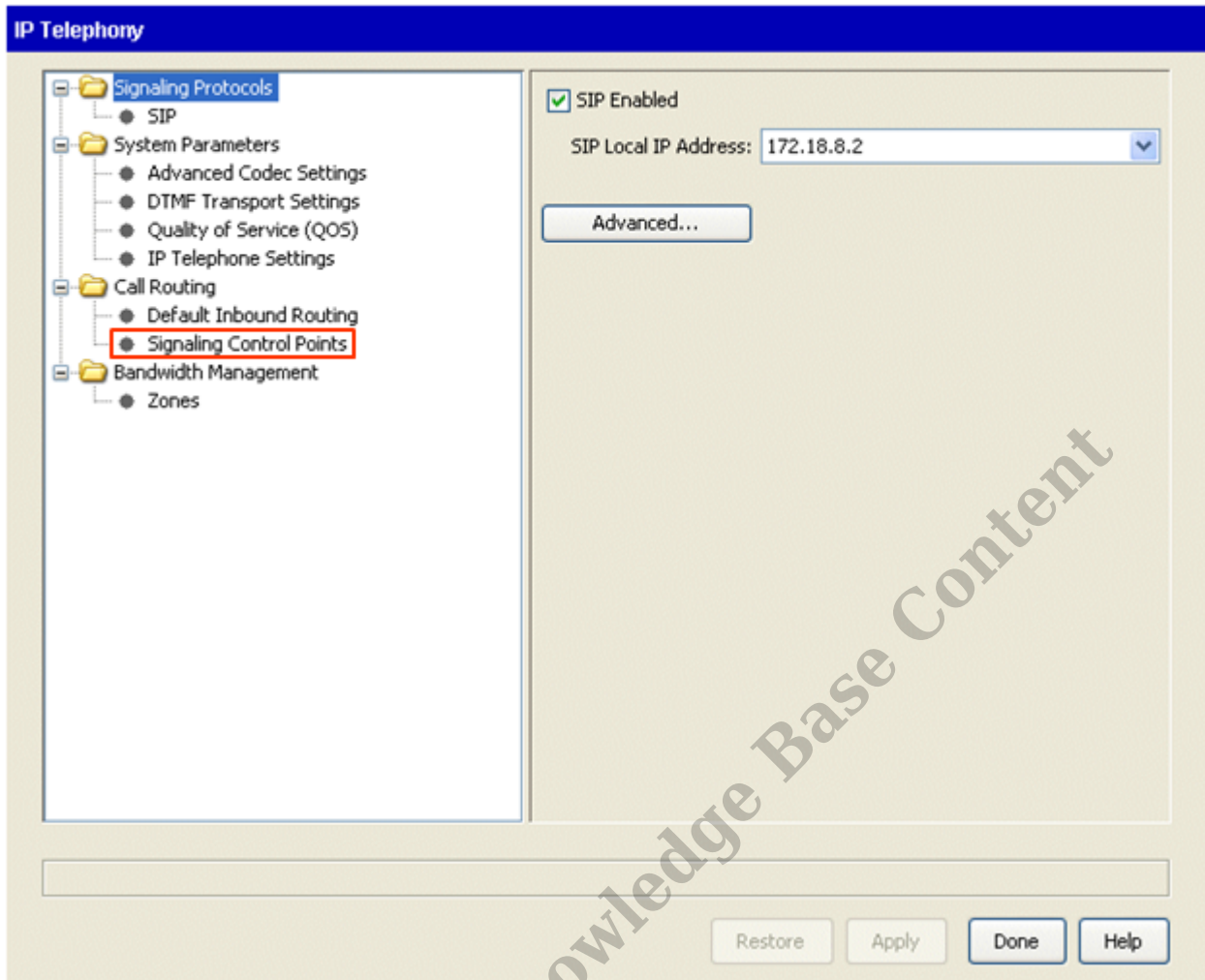
- IP Network Settings
- Network Connections

3. Make sure SIP is enabled. If you have not enabled it previously, check the box.

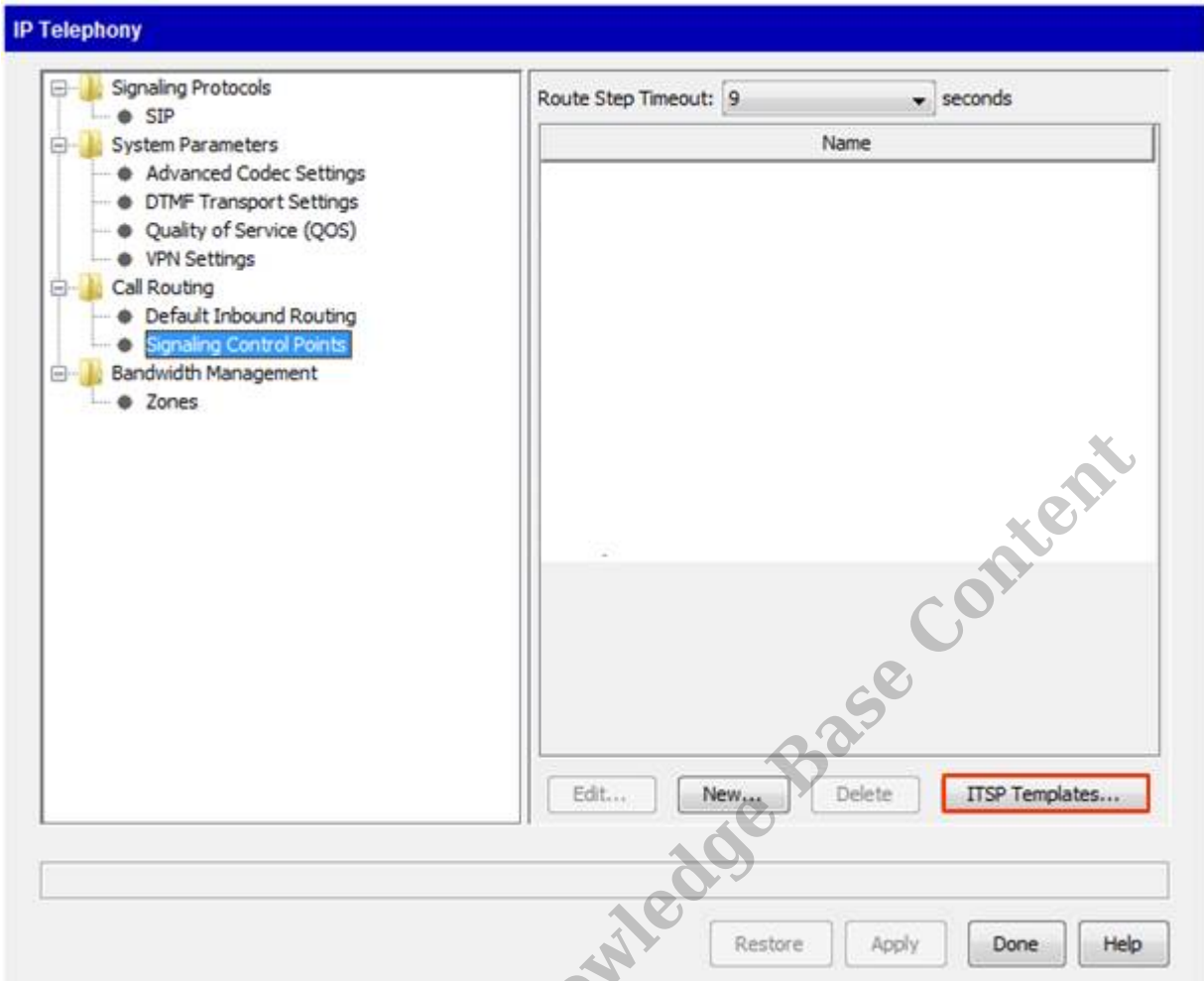


**Note:** If the checkbox is grayed out and can't be checked, then the system likely does not have a SIP Trunking License installed. Make sure to install the license. See [Add Licenses to Wave](#).

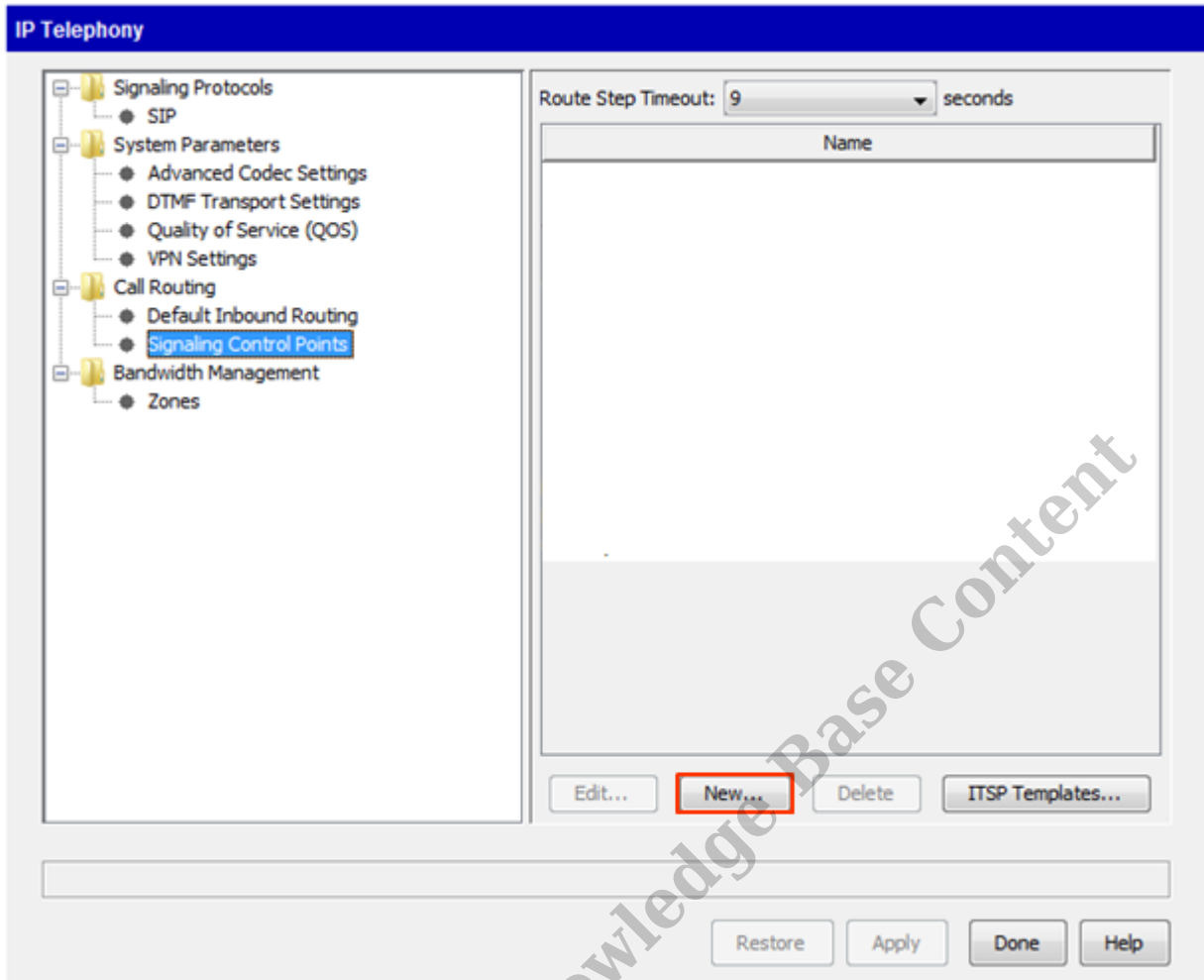
4. Click on Signaling Control Points.



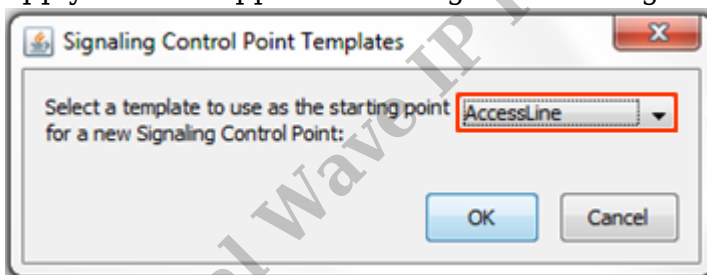
5. When using a Vertical Certified ITSP, select ITSP Templates.



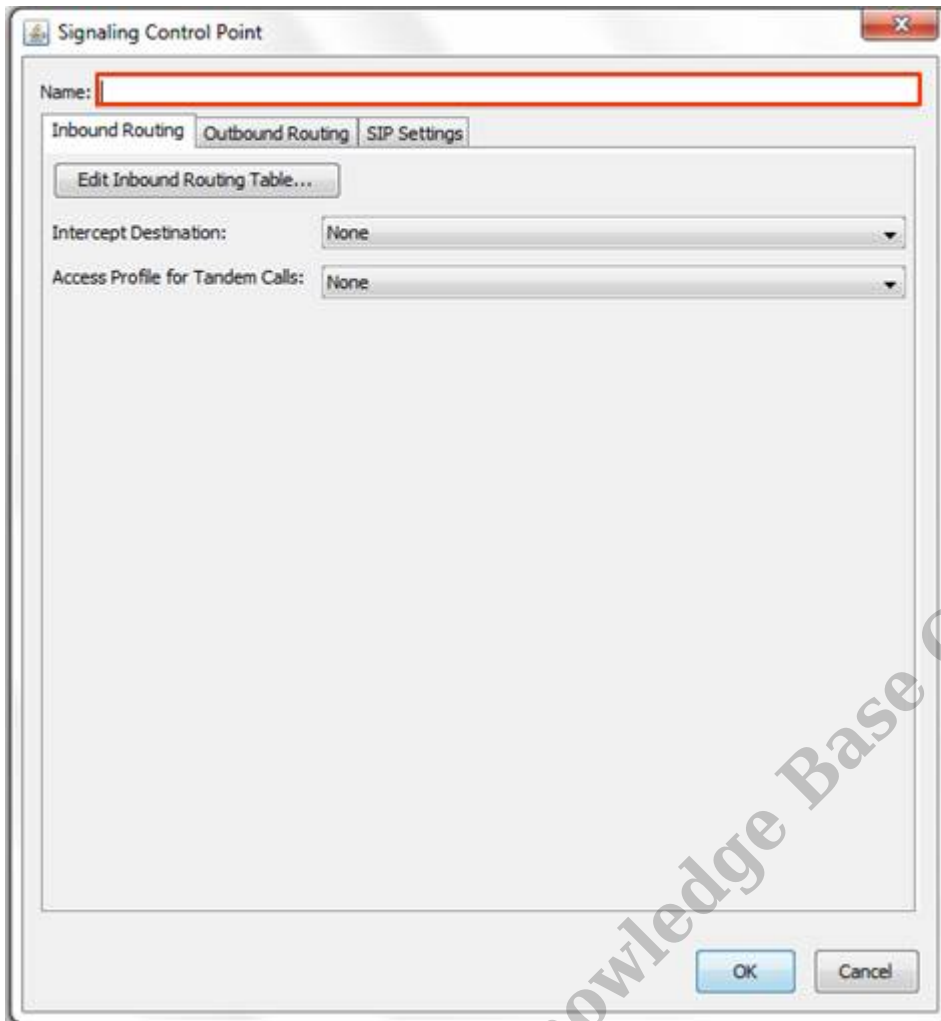
**Note:** If not using a certified ITSP, select New. Vertical cannot guarantee the settings or effectiveness when using a non-certified ITSP.



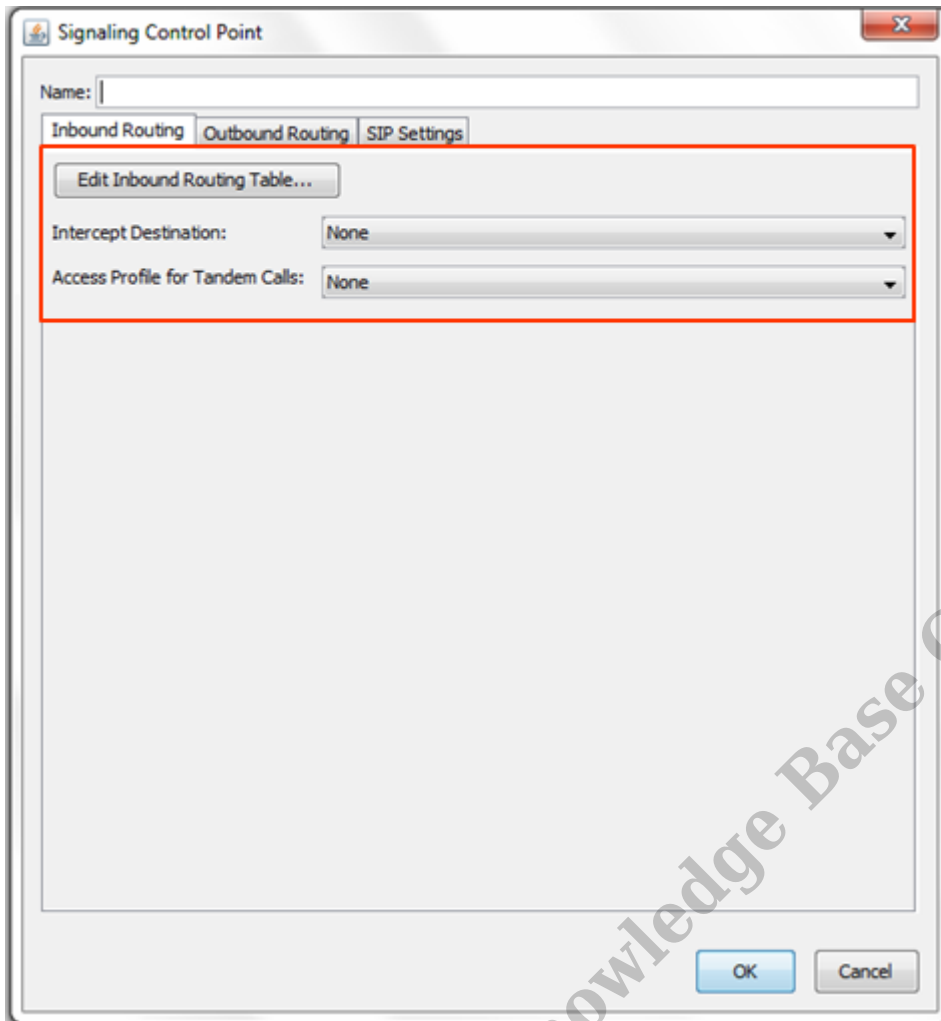
6. Use the drop-down box to select the appropriate certified ITSP and click OK. This will apply Vertical approved settings for working with this ITSP.



7. First, enter a descriptive name for this connection.



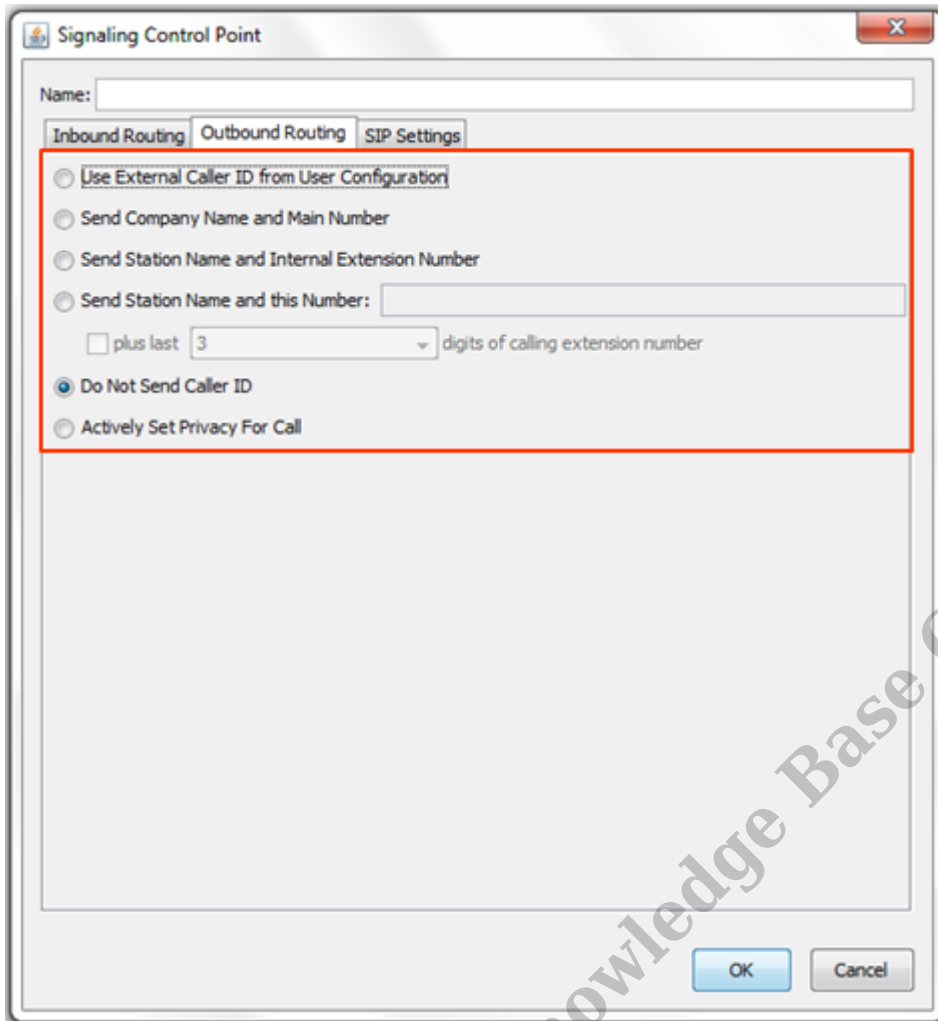
8. The first tab allows configuration of routing all inbound calls on this connection.



- **Inbound Routing Table button-** Specify complex routing for inbound calls. See [Configure Inbound Routing Table](#) for more information.
- **Intercept Destination-** Select an extension as the destination for all calls. This is used if the Inbound Routing Table doesn't provide direction.
- **Access Profile for Tandem Calls-** Choose the level of call routing permissions used if an inbound call is forwarded out another trunk. See Tandem Call routing for more information.

9. The Outbound Routing tab allows default configuration of callerID for all calls routed out this connection. See Caller ID for more information.





10. The SIP settings tab has technical configuration options for the SIP connection. This includes a number of fields that will automatically be set by the ITSP template.

The image shows a software window titled "Signaling Control Point" with a tabbed interface. The "SIP Settings" tab is active. At the top, there is a "Name:" field. Below it are three tabs: "Inbound Routing", "Outbound Routing", and "SIP Settings". Under the "SIP Settings" tab, there are fields for "User Name:", "Proxy Server:", and "Port:" (with the value "5060" entered). Below these is a section titled "Inbound/Outbound Settings" with a checkbox "SCP is located outside of Wave's network". Underneath is "This SCP will:" with two radio button options: "Receive registration from Contact" and "Register with a Proxy/Registrar" (which is selected). Below this are two sub-sections: "Authentication Settings" with a checkbox "Authentication Required" and fields for "Authentication Name:", "Password:", and "Verify Password:"; and "Registration Settings" with a checkbox "Registration Required", fields for "Registrar Server:" and "Registrar Port:", and a "Registration Expires (secs)" section with radio buttons for "Use System Default" and "Custom" (with the value "300" entered). At the bottom, there is a "Preferred DTMF Transport" dropdown menu set to "SIP INFO" and an "Advanced Settings..." button. The window ends with "OK" and "Cancel" buttons.

11. The User Name and Proxy Server fields must be filled out. These settings will be provided by the ITSP.

12. Other settings may be required on this page. The ITSP template will activate them if necessary (for example, Broadvox requires a registrar server and authentication so each of those categories are enabled.)

13. After filling in those required fields, click OK to create the new SCP.

**RELATED ARTICLES** [template("related")]