

Set Resource Management

Last Modified on 09/30/2015 12:56 pm EDT

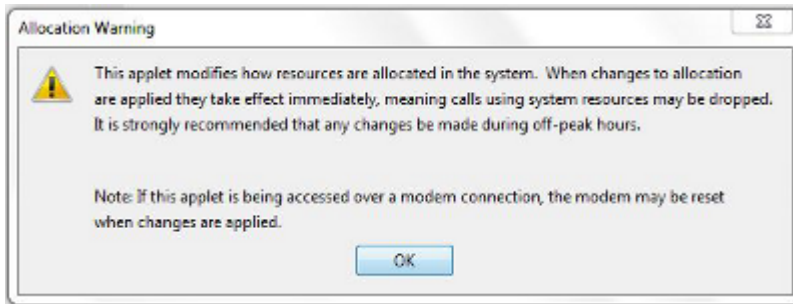
Wave includes configurable media resources that can be optimized for different uses. These resources are allocated in Resource Management. This applet also includes the Resource Management Advisor which will suggest specific settings for specific use cases.

To use Resource Management:

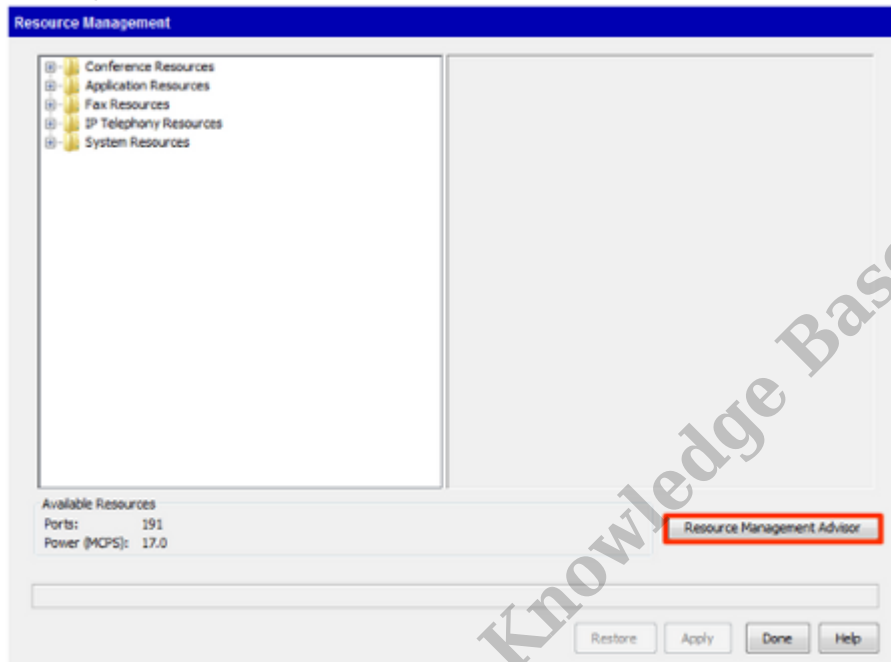
1. Login to Global Administrator (see [Login to Wave IP Global Administrator](#)).
2. Click on Resource Management.



3. A warning dialog will appear noting the serious consequences of changing resource allocation. Click OK.



4. The first step is to run the Resource Management Advisor. Click the "Resource Management Advisor" button.



5. The Resource Management Advisor will ask specific questions about the Wave implementation. These questions should be very similar to the questions answered on VCommerce during the quoting of the system. Answer all questions (do not leave any fields blank. Enter 0 instead of leaving a field blank.)

Resource Management Advisor

Answer all of the questions based on your system requirements, and then click OK to calculate the number of resources you need to allocate.

Phones

Please specify total number of Digital and Analog phones connected to the system.

Please specify total number of SIP phones connected to the system.

G.711 Codec is recommended and assumed for SIP Phones, however if G.729 Codec is needed, please specify the number of phones using G.729.

Call recording

Please specify the maximum number of simultaneous calls that need to be recorded. (Enter 0 if not using Call Recording)?

Allow call recording on external calls only? (Check for 'Yes')

Trunks

How many simultaneous calls need to be supported on digital and analog trunks?

Please specify the total number of concurrent calls over SIP trunk.

G.711 Codec is recommended and assumed for SIP Trunks. However if G.729 Codec is preferred please specify the number of trunks using G.729.

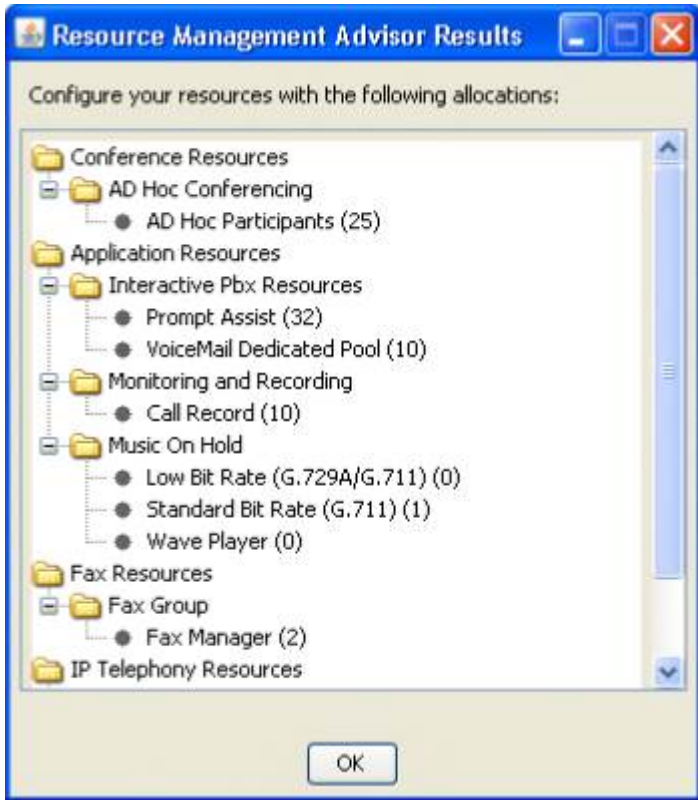
All incoming (or majority of) incoming calls going to be answered by an AutoAttendant. (check for 'Yes')

Conference

6. Click OK to get recommendations.

Note: *If your answers result in a configuration that cannot be supported by your system due to licensing or system limits, then you may receive an error message. Click OK and adjust the problem question to get valid recommendations.*

7. Copy the resulting recommendations down.



8. Click OK to close the screen and return to the Resource Management applet.
9. Open each folder in Resource Manage and click on each value to apply the recommended setting from Resource Management Advisor.
10. A drop-down box will appear to the left. Use it to set the recommended value.
Note: *The available settings in this dropdown will change based the settings already applied to other fields. If the value needed for a particular field isn't available, consider adjusting the value in another resource field. For example, when needed more conference resources, consider reducing the number of Music On Hold resources used.*
11. When all recommended resources have been applied, click Done to apply the settings.

RELATED ARTICLES [template("related")]