

Login to Wave IP Global Administrator

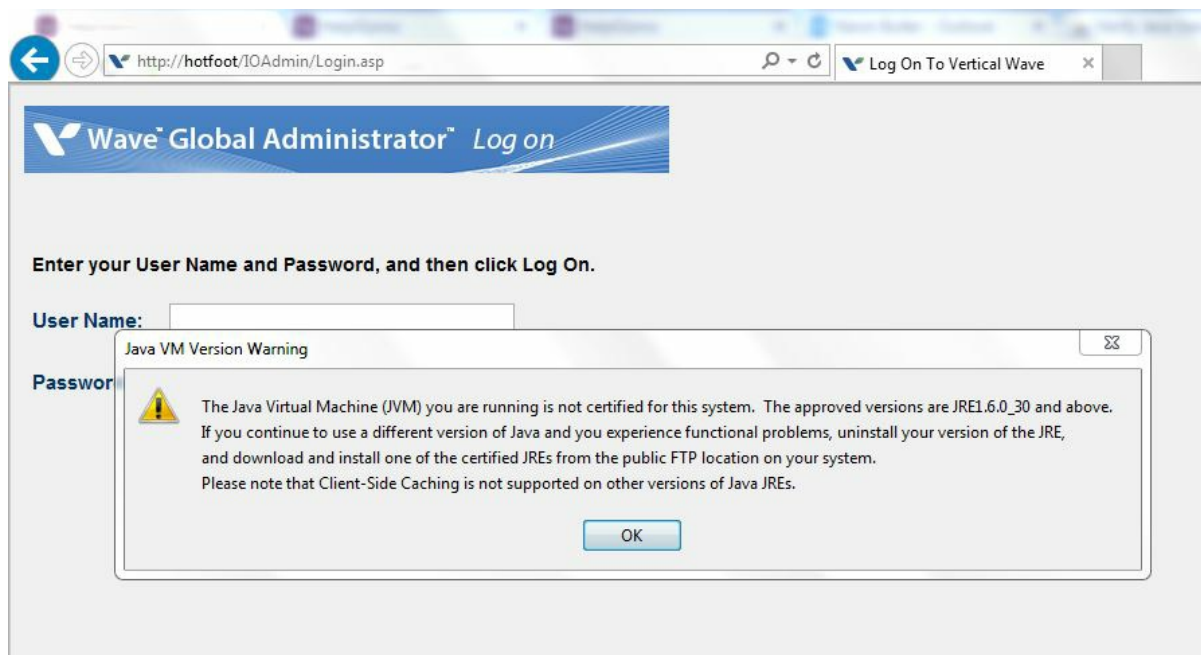
Last Modified on 07/25/2022 1:51 pm EDT

Pre-Requisites

- Internet Explorer (Version 6.0 or greater)
- Java Version 8 Update 30 or greater

Procedure

1. Open Internet Explorer and enter the URL for your Wave. (The Wave is default configured with the IP `http://192.168.205.1`)
2. The login screen will appear unless your version of Java is out of date (then you will a warning which you can click past).



3. Log in with a valid Wave IP administrator account.

Note: *The initial credentials on a Wave are: Username- Globaladministrator Password: Vertical4VoiP! and should be change immediately.*